

Anti-CD59 antibody (26-128) (STJ23006)
STJ23006

GENERAL INFORMATION

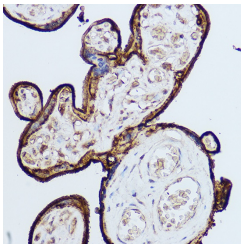
Product Type	Primary antibodies
Short Description	
Applications	WB/IHC-P/ELISA
Host/Source	Rabbit
Reactivity	Human/Mouse/Rat

PRODUCT PROPERTIES

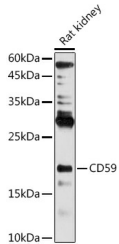
Clonality	Polyclonal
Clone ID	
Concentration	Lot specific
Conjugation	Unconjugated
Purification	Affinity purification
Dilution Range	WB:1:500-1:1000 IHC-P:1:50-1:200 ELISA:Recommended starting concentration is 1 Mu g/mL. Please optimize the concentration based on your specific assay requirements.
Formulation	PBS with 0.02% Sodium Azide, 50% Glycerol, pH 7.3.
Isotype	IgG
Storage	Store at -20°C for up to 1 year from the date of receipt, and avoid repeat freeze-thaw cycles.
Instruction	

TARGET INFORMATION

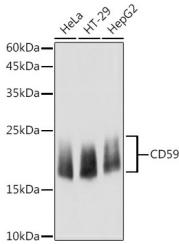
Gene ID	966
Gene Symbol	CD59
Uniprot ID	CD59_HUMAN
Immunogen	
Immunogen Region	26-128
Specificity	Recombinant fusion protein containing a sequence corresponding to amino acids 26-128 of human CD59 (NP_001120695.1).
Immunogen Sequence	LQCYNCPNPTADCKTAVNCS SDFDACLTGKAGLQVYNKCW KFEHCNFDVITRLRENELT YYCCKKDLNCFNEQLENGGT SLSEKTVLLLVTPFLAAAWS LHP



Immunohistochemistry analysis of CD59 in paraffin-embedded human placenta using CD59 Rabbit polyclonal antibody (STJ23006) at dilution of 1:50 (40x lens). Perform high pressure antigen retrieval with 10 mM citrate buffer pH 6.0 before commencing with immunohistochemistry staining protocol.



Western blot analysis of lysates from Rat kidney, using CD59 Rabbit polyclonal antibody (STJ23006) at 1:500 dilution. Secondary antibody: HRP Goat Anti-Rabbit IgG (H+L) (STJS000856) at 1:10000 dilution. Lysates/proteins: 25 Mu g per lane. Blocking buffer: 3% nonfat dry milk in TBST. Detection: ECL Enhanced Kit. Exposure time: 180s.



Western blot analysis of various lysates using CD59 Rabbit polyclonal antibody (STJ23006) at 1:500 dilution. Secondary antibody: HRP Goat Anti-Rabbit IgG (H+L) (STJS000856) at 1:10000 dilution. Lysates/proteins: 25 Mu g per lane. Blocking buffer: 3% nonfat dry milk in TBST. Detection: ECL Basic Kit. Exposure time: 1s.

This product is suitable for in-vitro studies under the RESEARCH USE ONLY [RUO] licence. This product must not be used as for diagnostic or other medical purposes.
St John's Laboratory Ltd, Knowledge Dock Business Centre, University Way, London, E16 2RD | Tel: 0208 223 3081