

**Anti-CD3D antibody (22-105) (STJ22995)**  
STJ22995

**GENERAL INFORMATION**

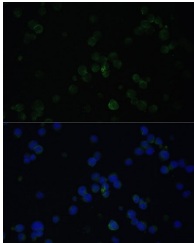
<b>Product Type</b>	Primary antibodies
<b>Short Description</b>	
<b>Applications</b>	WB/IHC-P/IF/ICC/ELISA
<b>Host/Source</b>	Rabbit
<b>Reactivity</b>	Human/Rat

**PRODUCT PROPERTIES**

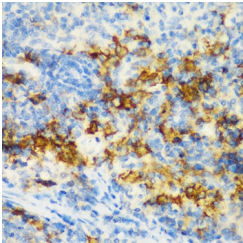
<b>Clonality</b>	Polyclonal
<b>Clone ID</b>	
<b>Concentration</b>	Lot specific
<b>Conjugation</b>	Unconjugated
<b>Purification</b>	Affinity purification
<b>Dilution Range</b>	WB:1:500-1:2000 IHC-P:1:50-1:100 IF/ICC:1:50-1:100 ELISA:Recommended starting concentration is 1 Mu g/mL. Please optimize the concentration based on your specific assay requirements.
<b>Formulation</b>	PBS with 0.02% Sodium Azide, 50% Glycerol, pH 7.3.
<b>Isotype</b>	IgG
<b>Storage Instruction</b>	Store at-20°C for up to 1 year from the date of receipt, and avoid repeat freeze-thaw cycles.

**TARGET INFORMATION**

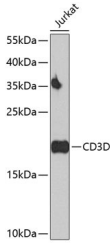
<b>Gene ID</b>	915
<b>Gene Symbol</b>	CD3D
<b>Uniprot ID</b>	CD3D_HUMAN
<b>Immunogen</b>	
<b>Immunogen Region</b>	22-105
<b>Specificity</b>	Recombinant fusion protein containing a sequence corresponding to amino acids 22-105 of human CD3D (NP_000723.1).
<b>Immunogen Sequence</b>	FKPIEELEDRVFVNCNTSI TWVEGTVGTLSDITRLDLG KRILDPRGIYRCNGTDIYKD KESTVQVHYRMCQSCVELDP ATVA



Immunofluorescence analysis of Jurkat cells using CD3D antibody (STJ22995) at dilution of 1:100. Blue: DAPI for nuclear staining.



Immunohistochemistry analysis of paraffin-embedded rat spleen using CD3D antibody (STJ22995) at dilution of 1:200 (40x lens). Perform microwave antigen retrieval with 10 mM PBS buffer pH 7.2 before commencing with immunohistochemistry staining protocol.



Western blot analysis of extracts of Jurkat cells, using CD3D antibody (STJ22995) at 1:500 dilution. Secondary antibody: HRP Goat Anti-Rabbit IgG (H+L) (STJS000856) at 1:10000 dilution. Lysates/proteins: 25 Mu g per lane. Blocking buffer: 3% nonfat dry milk in TBST. Detection: ECL Enhanced Kit. Exposure time: 90s.