

Anti-NCR2 antibody (22-192) (STJ22990)

STJ22990

GENERAL INFORMATION

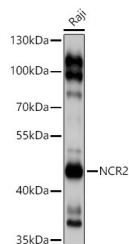
Product Type	Primary antibodies
Short Description	
Applications	WB/ELISA
Host/Source	Rabbit
Reactivity	Human

PRODUCT PROPERTIES

Clonality	Polyclonal
Clone ID	
Concentration	Lot specific
Conjugation	Unconjugated
Purification	Affinity purification
Dilution	WB: 1:200-1:2000
Range	ELISA: Recommended starting concentration is 1 µg/mL. Please optimize the concentration based on your specific assay requirements.
Formulation	PBS with 0.02% Sodium Azide, 50% Glycerol, pH 7.3.
Isotype	IgG
Storage	Store at -20°C for up to 1 year from the date of receipt, and avoid repeat freeze-thaw cycles.
Instruction	

TARGET INFORMATION

Gene ID	9436
Gene Symbol	NCR2
Uniprot ID	NCTR2_HUMAN
Immunogen	
Immunogen Region	22-192
Specificity	Recombinant fusion protein containing a sequence corresponding to amino acids 22-192 of human NCR2 (NP_004819.2).
Immunogen Sequence	QSKAQVLQSVAGQTLTVRCQ YPPTGSLYEKKGWCKEASAL VCIRLVTSKPRMTMAWTSRF TIWDDPDAGFFVTMTDLRE EDSGHYWCRIYRPSDNSVSK SVRFYLVSPASASTQTSWT PRDLVSSQTQTQSCVPPTAG ARQAPESPSTIPVPSQPQNS TLRPGPAAPIA



Western blot analysis of extracts of Raji cells, using NCR2 antibody (STJ22990) at 1:1000 dilution. Secondary antibody: HRP Goat Anti-rabbit IgG (H+L) at 1:10000 dilution. Lysates/proteins: 25 µg per lane. Blocking buffer: 3% nonfat dry milk in TBST. Detection: ECL Basic Kit. Exposure time: 10s.

This product is suitable for in-vitro studies under the RESEARCH USE ONLY [RUO] licence. This product must not be used as for diagnostic or other medical purposes.
St John's Laboratory Ltd, Knowledge Dock Business Centre, University Way, London, E16 2RD | Tel: 0208 223 3081