

## Anti-CD274 antibody (190-290) (STJ22985)

STJ22985

### GENERAL INFORMATION

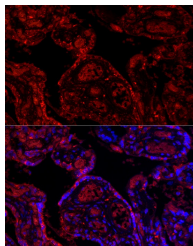
<b>Product Type</b>	Primary antibodies
<b>Short Description</b>	
<b>Applications</b>	WB/IHC-P/IF/ICC/ELISA
<b>Host/Source</b>	Rabbit
<b>Reactivity</b>	Human/Mouse/Rat

### PRODUCT PROPERTIES

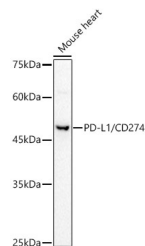
<b>Clonality</b>	Polyclonal
<b>Clone ID</b>	
<b>Concentration</b>	Lot specific
<b>Conjugation</b>	Unconjugated
<b>Purification</b>	Affinity purification
<b>Dilution Range</b>	WB:1:500-1:2000 IHC-P:1:50-1:200 IF/ICC:1:50-1:200 ELISA:Recommended starting concentration is 1 µg/mL. Please optimize the concentration based on your specific assay requirements.
<b>Formulation</b>	PBS with 0.05% Proclin300, 50% Glycerol, pH 7.3.
<b>Isotype</b>	IgG
<b>Storage Instruction</b>	Store at -20°C for up to 1 year from the date of receipt, and avoid repeat freeze-thaw cycles.

### TARGET INFORMATION

<b>Gene ID</b>	29126
<b>Gene Symbol</b>	CD274
<b>Uniprot ID</b>	PD1L1_HUMAN
<b>Immunogen</b>	
<b>Immunogen Region</b>	190-290
<b>Specificity</b>	A synthetic peptide corresponding to a sequence within amino acids 190-290 of human PD-L1/CD274 (NP_054862.1).
<b>Immunogen Sequence</b>	LFNVTSTLRINTTNEIFYC TFRRLDPEENHTAELVPEL PLAHPNERNTHLVILGAILL CLGVALTFFRLRKGRMMDV KKCGIQDTNSKKQSDTHLEE T



Immunofluorescence analysis of paraffin-embedded human placenta using PD-L1/CD274 Rabbit polyclonal antibody (STJ22985) at dilution of 1:200 (40x lens). Secondary antibody: Cy3 Goat Anti-Rabbit IgG (H+L) at 1:500 dilution. Blue: DAPI for nuclear staining.



Western blot analysis of lysates from Mouse heart, using PD-L1/CD274 Rabbit polyclonal antibody (STJ22985) at 1:500 dilution. Secondary antibody: HRP Goat Anti-Rabbit IgG (H+L) (STJ5000856) at 1:10000 dilution. Lysates/proteins: 25 µg per lane. Blocking buffer: 3% nonfat dry milk in TBST. Detection: ECL Basic Kit. Exposure time: 60s.