

## Anti-CD19 antibody (457-556) (STJ22976)

STJ22976

### GENERAL INFORMATION

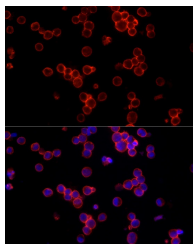
<b>Product Type</b>	Primary antibodies
<b>Short Description</b>	
<b>Applications</b>	WB/IF/ICC/ELISA
<b>Host/Source</b>	Rabbit
<b>Reactivity</b>	Human/Mouse/Rat

### PRODUCT PROPERTIES

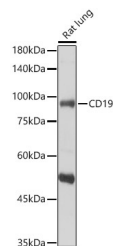
<b>Clonality</b>	Polyclonal
<b>Clone ID</b>	
<b>Concentration</b>	Lot specific
<b>Conjugation</b>	Unconjugated
<b>Purification</b>	Affinity purification
<b>Dilution Range</b>	WB:1:500-1:1000 IF/ICC:1:50-1:200 ELISA:Recommended starting concentration is 1 Mu g/mL. Please optimize the concentration based on your specific assay requirements.
<b>Formulation</b>	PBS with 0.02% Sodium Azide, 50% Glycerol, pH 7.3.
<b>Isotype</b>	IgG
<b>Storage</b>	Store at -20°C for up to 1 year from the date of receipt, and avoid repeat freeze-thaw cycles.
<b>Instruction</b>	

### TARGET INFORMATION

<b>Gene ID</b>	930
<b>Gene Symbol</b>	CD19
<b>Uniprot ID</b>	CD19_HUMAN
<b>Immunogen</b>	
<b>Immunogen Region</b>	457-556
<b>Specificity</b>	A synthetic peptide corresponding to a sequence within amino acids 457-556 of human CD19 (NP_001761.3).
<b>Immunogen Sequence</b>	NAESYENEDEELTQPVARTM DFLSPHGSADWPSREATSLG SQSYEDMRGILYAAPQLRSI RGQPGPNHEEDADSYENMDN PDGPDPAWGGGGRMGTWSTR



Immunofluorescence analysis of Raji cells using CD19 Rabbit polyclonal antibody (STJ22976) at dilution of 1:100 (40x lens). Blue: DAPI for nuclear staining.



Western blot analysis of Rat lung, using CD19 Rabbit polyclonal antibody (STJ22976) at 1:1000 dilution. Secondary antibody: HRP Goat Anti-Rabbit IgG (H+L) (STJS000856) at 1:10000 dilution. Lysates/proteins: 25ug per lane. Blocking buffer: 3% nonfat dry milk in TBST. Detection: ECL Basic Kit. Exposure time: 60s.