

## Anti-CD151 antibody (113-253) (STJ22974)

STJ22974

### GENERAL INFORMATION

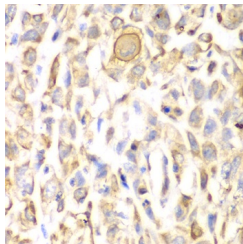
<b>Product Type</b>	Primary antibodies
<b>Short Description</b>	
<b>Applications</b>	WB/IHC-P/ELISA
<b>Host/Source</b>	Rabbit
<b>Reactivity</b>	Human/Mouse/Rat

### PRODUCT PROPERTIES

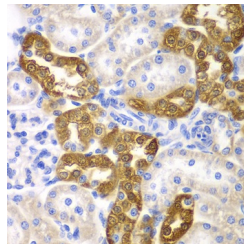
<b>Clonality</b>	Polyclonal
<b>Clone ID</b>	
<b>Concentration</b>	Lot specific
<b>Conjugation</b>	Unconjugated
<b>Purification</b>	Affinity purification
<b>Dilution Range</b>	WB:1:500-1:1000 IHC-P:1:50-1:200 ELISA:Recommended starting concentration is 1 µg/mL. Please optimize the concentration based on your specific assay requirements.
<b>Formulation</b>	PBS with 0.05% Proclin300, 50% Glycerol, pH 7.3.
<b>Isotype</b>	IgG
<b>Storage Instruction</b>	Store at -20°C for up to 1 year from the date of receipt, and avoid repeat freeze-thaw cycles.

### TARGET INFORMATION

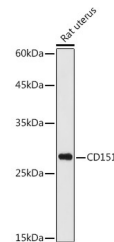
<b>Gene ID</b>	977
<b>Gene Symbol</b>	CD151
<b>Uniprot ID</b>	CD151_HUMAN
<b>Immunogen</b>	
<b>Immunogen Region</b>	113-253
<b>Specificity</b>	Recombinant fusion protein containing a sequence corresponding to amino acids 113-221 of human CD151 (NP_004348.2).
<b>Immunogen Sequence</b>	AYYQQLNTELKENLKDTMTK RYHQPGEAVTSAVDQLQQE FHCCGSNNSQDWRDSEWIRS QEAGGRVVPDSCCKTVVALC GQRDHASNIYKVEGGCITKL ETFIQEHLR



Immunohistochemistry analysis of CD151 in paraffin-embedded human lung cancer using CD151 Rabbit polyclonal antibody (STJ22974) at dilution of 1:200 (40x lens). Perform microwave antigen retrieval with 10 mM PBS buffer pH 7.2 before commencing with immunohistochemistry staining protocol.



Immunohistochemistry analysis of CD151 in paraffin-embedded rat kidney using CD151 Rabbit polyclonal antibody (STJ22974) at dilution of 1:200 (40x lens). Perform microwave antigen retrieval with 10 mM PBS buffer pH 7.2 before commencing with immunohistochemistry staining protocol.



Western blot analysis of lysates from Rat uterus, using CD151 Rabbit polyclonal antibody (STJ22974) at 1:1000 dilution. Secondary antibody: HRP Goat Anti-Rabbit IgG (H+L) (STJS000856) at 1:10000 dilution. Lysates/proteins: 25 µg per lane. Blocking buffer: 3% nonfat dry milk in TBST. Detection: ECL Basic Kit. Exposure time: 90s.