

Anti-CCL22 antibody (25-93) (STJ22931)

STJ22931

GENERAL INFORMATION

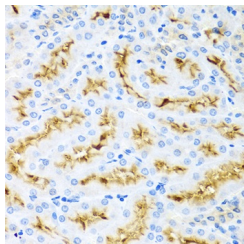
Product Type	Primary antibodies
Short Description	
Applications	IHC-P/ELISA
Host/Source	Rabbit
Reactivity	Human/Rat

PRODUCT PROPERTIES

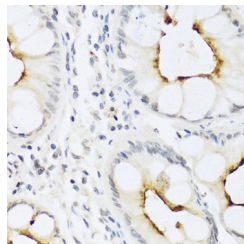
Clonality	Polyclonal
Clone ID	
Concentration	Lot specific
Conjugation	Unconjugated
Purification	Affinity purification
Dilution Range	IHC-P:1:50-1:200 ELISA:Recommended starting concentration is 1 µg/mL. Please optimize the concentration based on your specific assay requirements.
Formulation	PBS with 0.09% Sodium Azide, 50% Glycerol, pH 7.3.
Isotype	IgG
Storage Instruction	Store at -20°C for up to 1 year from the date of receipt, and avoid repeat freeze-thaw cycles.

TARGET INFORMATION

Gene ID	6367
Gene Symbol	CCL22
Uniprot ID	CCL22_HUMAN
Immunogen	
Immunogen Region	25-93
Specificity	Recombinant fusion protein containing a sequence corresponding to amino acids 25-93 of human CCL22 (NP_002981.2).
Immunogen Sequence	GPYGANMEDSVCCRDYVRYR LPLRVVKHFYWTSDSCPRPG VLLTFRDKEICADPRVPWV KMILNKLSQ



Immunohistochemistry of paraffin-embedded rat kidney using CCL22 antibody (STJ22931) at dilution of 1:100 (40x lens).



Immunohistochemistry of paraffin-embedded human colon using CCL22 antibody (STJ22931) at dilution of 1:100 (40x lens).

This product is suitable for in-vitro studies under the RESEARCH USE ONLY [RUO] licence. This product must not be used as for diagnostic or other medical purposes.
St John's Laboratory Ltd, Knowledge Dock Business Centre, University Way, London, E16 2RD | Tel: 0208 223 3081