

Anti-CBX5 antibody (1-191) (STJ22922)
STJ22922

GENERAL INFORMATION

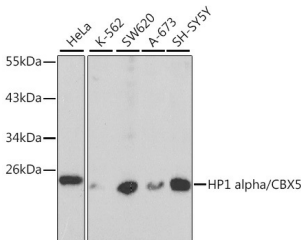
Product Type	Primary antibodies
Short Description	
Applications	WB/IHC-P/IF/ICC/IP/ELISA/ChIP
Host/Source	Rabbit
Reactivity	Human/Mouse/Rat

PRODUCT PROPERTIES

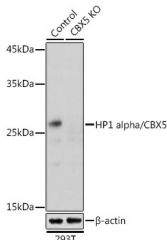
Clonality	Polyclonal
Clone ID	
Concentration	Lot specific
Conjugation	Unconjugated
Purification	Affinity purification
Dilution	WB:1:500-1:2000
Range	IHC-P:1:50-1:200 IF/ICC:1:50-1:200 IP:0.5 Mu g-4 Mu g antibody for 200 Mu g-400 Mu g extracts of whole cells ELISA:Recommended starting concentration is 1 Mu g/mL. Please optimize the concentration based on your specif
Formulation	PBS with 0.02% Sodium Azide, 50% Glycerol, pH 7.3.
Isotype	IgG
Storage	Store at-20°C for up to 1 year from the date of receipt, and avoid repeat freeze-thaw cycles.
Instruction	

TARGET INFORMATION

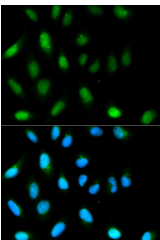
Gene ID	23468
Gene Symbol	CBX5
Uniprot ID	CBX5_HUMAN
Immunogen	
Immunogen Region	1-191
Specificity	Recombinant fusion protein containing a sequence corresponding to amino acids 1-191 of human HP1 alpha/HP1 alpha/CBX5 (NP_001120794.1).
Immunogen Sequence	MGKKTTRTADSSSEDEEEY WEKVLDRRVKQVEYLLK WKGFSSEHNTWEPEKNLDCP ELISEFMKKYKKMKEGENNK PREKSESNNRKSNFNSNSADD IKSKKKREQSNDIARGFERG LEPEKIIGATDSCGDLMFLLM KWKDTDEADLVLAKENVKC PQIVAFYEERLTWHAYPED AENKEKETAKS



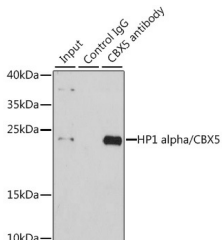
Western blot analysis of extracts of various cell lines, using HP1 alpha/HP1 alpha/CBX5 antibody (STJ22922) at 1:1000 dilution. Secondary antibody: HRP Goat Anti-rabbit IgG (H+L) at 1:10000 dilution. Lysates/proteins: 25ug per lane. Blocking buffer: 3% nonfat dry milk in TBST.



Western blot analysis of extracts from normal (control) and HP1 alpha/HP1 alpha/CBX5 rabbit polyclonal antibody knockout (KO) 293T cells, using HP1 alpha/HP1 alpha/CBX5 rabbit polyclonal antibody (STJ22922) at 1:1000 dilution. Secondary antibody: HRP Goat Anti-rabbit IgG (H+L) at 1:10000 dilution. Lysates/proteins: 25ug per lane. Blocking buffer: 3% nonfat dry milk in TBST. Detection: ECL Basic Kit. Exposure time: 1s.



Immunofluorescence analysis of HeLa cells using HP1 alpha/HP1 alpha/CBX5 antibody (STJ22922). Blue: DAPI for nuclear staining.



Immunoprecipitation analysis of 200ug extracts of HeLa cells using 1ug HP1 alpha/HP1 alpha/CBX5 antibody (STJ22922). Western blot was performed from the immunoprecipitate using HP1 alpha/HP1 alpha/CBX5 antibody (STJ22922) at a dilution of 1:1000.

This product is suitable for in-vitro studies under the RESEARCH USE ONLY [RUO] licence. This product must not be used as for diagnostic or other medical purposes.
St John's Laboratory Ltd, Knowledge Dock Business Centre, University Way, London, E16 2RD | Tel: 0208 223 3081