

Anti-CBX3 antibody (1-183) (STJ22921)
STJ22921

GENERAL INFORMATION

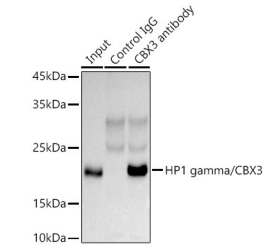
Product Type	Primary antibodies
Short Description	
Applications	WB/IHC-P/IF/ICC/IP/ELISA
Host/Source	Rabbit
Reactivity	Human/Mouse/Rat

PRODUCT PROPERTIES

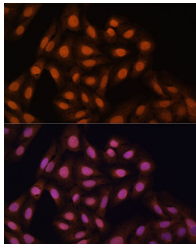
Clonality	Polyclonal
Clone ID	
Concentration	Lot specific
Conjugation	Unconjugated
Purification	Affinity purification
Dilution	WB:1:500-1:1000
Range	IHC-P:1:50-1:200 IF/ICC:1:50-1:200 IP:0.5 Mu g-4 Mu g antibody for 200 Mu g-400 Mu g extracts of whole cells ELISA:Recommended starting concentration is 1 Mu g/mL. Please optimize the concentration based on your specif
Formulation	PBS with 0.02% Sodium Azide, 50% Glycerol, pH 7.3.
Isotype	IgG
Storage	Store at-20°C for up to 1 year from the date of receipt, and avoid repeat freeze-thaw cycles.
Instruction	

TARGET INFORMATION

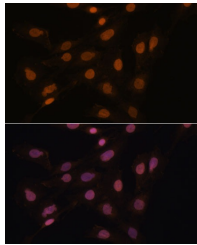
Gene ID	11335
Gene Symbol	CBX3
Uniprot ID	CBX3_HUMAN
Immunogen	
Region	1-183
Specificity	Recombinant fusion protein containing a sequence corresponding to amino acids 1-183 of human HP1 gamma/HP1 gamma/CBX3 (NP_009207.2).
Immunogen Sequence	MASNKTTLQKMGKKQNGKSK KVEEAPEEFVVEKVLDRRV VNGKVEYFLKWGFTDADNT WEPEENLDCPELIEAFLNSQ KAGKEKDGTGRKSLSDSESD DSKSKKKRDAADKPRGFARG LDPERIIGATDSSGELMFLM KWKDSDEADLVLAKEANMKC PQVIAFYERLTWHS CPED EAQ



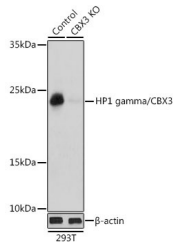
Immunoprecipitation analysis of 300 Mu g extracts of HeLa cells using 3 Mu g HP1 gamma/CBX3 antibody (STJ22921). Western blot was performed from the immunoprecipitate using HP1 gamma/CBX3 antibody (STJ22921) at a dilution of 1:1000.



Immunofluorescence analysis of U-2 OS cells using [KO Validated] HP1 gamma/CBX3 Rabbit polyclonal antibody (STJ22921) at dilution of 1:100. Secondary antibody: Cy3 Goat Anti-Rabbit IgG (H+L) at 1:500 dilution. Blue: DAPI for nuclear staining.



Immunofluorescence analysis of C6 cells using [KO Validated] HP1 gamma/CBX3 Rabbit polyclonal antibody (STJ22921) at dilution of 1:100. Secondary antibody: Cy3 Goat Anti-Rabbit IgG (H+L) at 1:500 dilution. Blue: DAPI for nuclear staining.



Western blot analysis of lysates from wild type (WT) and HP1 gamma/HP1 gamma/CBX3 knockout (KO) 293T cells, using [KO Validated] HP1 gamma/CBX3 Rabbit polyclonal antibody (STJ22921) at 1:1000 dilution. Secondary antibody: HRP Goat Anti-Rabbit IgG (H+L) (STJ5000856) at 1:10000 dilution. Lysates/proteins: 25 Mu g per lane. Blocking buffer: 3% nonfat dry milk in TBST. Detection: ECL Basic Kit. Exposure time: 1s.