

Anti-CASP3 antibody (55-277) (STJ22900)

STJ22900

GENERAL INFORMATION

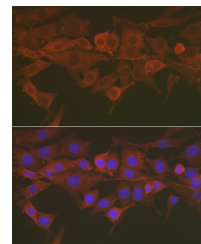
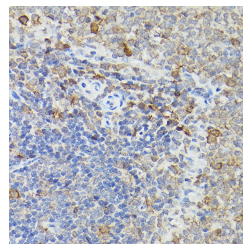
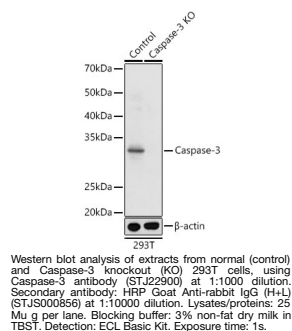
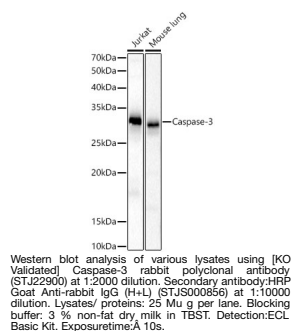
| | |
|--------------------------|-----------------------|
| Product Type | Primary antibodies |
| Short Description | |
| Applications | WB/IHC-P/IF/ICC/ELISA |
| Host/Source | Rabbit |
| Reactivity | Human/Mouse/Rat |

PRODUCT PROPERTIES

| | |
|----------------------------|--|
| Clonality | Polyclonal |
| Clone ID | |
| Concentration | Lot specific |
| Conjugation | Unconjugated |
| Purification | Affinity purification |
| Dilution Range | WB:1:1000-1:5000 IHC-P:1:50-1:200 IF/ICC:1:50-1:200 ELISA:Recommended starting concentration is 1 µg/mL. Please optimize the concentration based on your specific assay requirements. |
| Formulation | PBS with 0.02% Sodium Azide, 50% Glycerol, pH 7.3. |
| Isotype | IgG |
| Storage Instruction | Store at -20°C for up to 1 year from the date of receipt, and avoid repeat freeze-thaw cycles. |

TARGET INFORMATION

| | |
|---------------------------|--|
| Gene ID | 836 |
| Gene Symbol | CASP3 |
| Uniprot ID | CASP3_HUMAN |
| Immunogen | |
| Immunogen Region | 55-277 |
| Specificity | Recombinant fusion protein containing a sequence corresponding to amino acids 55-160 of human Caspase-3 (NP_004337.2). |
| Immunogen Sequence | FHKSTGMTSRSGTDVDAANL RETFRNLKYEVRNKNLDTRE EIVELMRDVSKEHHSKRSSF VCVLLSHGEEGIIFGTNGPV DLKKITNFRGDRCSRLTGK PKLFII |



This product is suitable for in-vitro studies under the RESEARCH USE ONLY [RUO] licence. This product must not be used as for diagnostic or other medical purposes.
St John's Laboratory Ltd, Knowledge Dock Business Centre, University Way, London, E16 2RD | Tel: 0208 223 3081