

Anti-CALR antibody (18-203) (STJ22866)
STJ22866

GENERAL INFORMATION

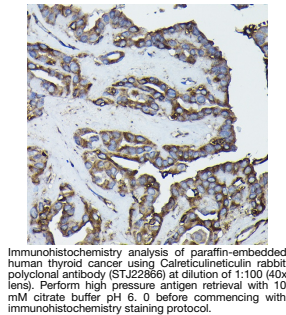
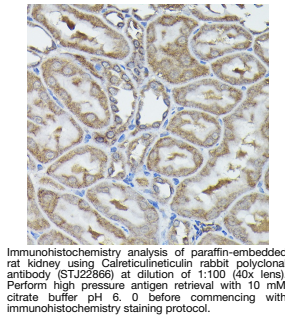
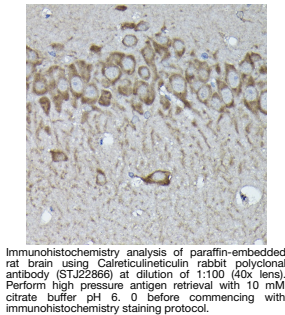
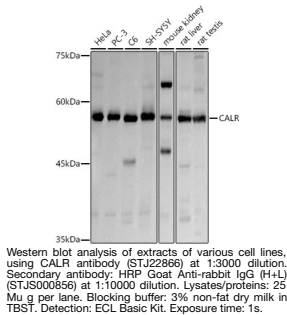
Product Type	Primary antibodies
Short Description	
Applications	WB/IHC-P/IF/ICC/ELISA
Host/Source	Rabbit
Reactivity	Human/Mouse/Rat

PRODUCT PROPERTIES

Clonality	Polyclonal
Clone ID	
Concentration	Lot specific
Conjugation	Unconjugated
Purification	Affinity purification
Dilution	WB:1:1000-1:5000
Range	IHC-P:1:50-1:200 IF/ICC:1:50-1:200 ELISA:Recommended starting concentration is 1 μ g/mL. Please optimize the concentration based on your specific assay requirements.
Formulation	PBS with 0.05% Proclin300, 50% Glycerol, pH 7.3.
Isotype	IgG
Storage	Store at -20°C for up to 1 year from the date of receipt, and avoid repeat freeze-thaw cycles.
Instruction	

TARGET INFORMATION

Gene ID	811
Gene Symbol	CALR
Uniprot ID	CALR_HUMAN
Immunogen	
Region	18-203
Specificity	Recombinant fusion protein containing a sequence corresponding to amino acids 18-203 of human Calreticulineluticulin (NP_004334.1).
Immunogen Sequence	EPAVYFKEQFLDGDGWTSRW IESKHKSDFGKFLSSGKFY GDEEKDKGLQTSQDARFYAL SASFEPFSNKGQTLVVQFTV KHEQNIDCGGGYVKLFPNLSL DQDTMHGDSEYNIMFGPDIC GPGTKKVHVIFNYKGNVLI NKDIRCKDDEFTHLTYLIVR PDNTYEVKIDNSQVESGSLE DDWDFL



This product is suitable for in-vitro studies under the RESEARCH USE ONLY [RUO] licence. This product must not be used as for diagnostic or other medical purposes.
St John's Laboratory Ltd, Knowledge Dock Business Centre, University Way, London, E16 2RD | Tel: 0208 223 3081