

Anti-CALM3 antibody (1-149) (STJ22865)

STJ22865

GENERAL INFORMATION

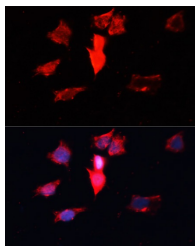
| | |
|--------------------------|--------------------|
| Product Type | Primary antibodies |
| Short Description | |
| Applications | WB/IF/ICC/ELISA |
| Host/Source | Rabbit |
| Reactivity | Human/Mouse |

PRODUCT PROPERTIES

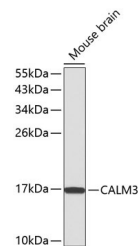
| | |
|----------------------------|--|
| Clonality | Polyclonal |
| Clone ID | |
| Concentration | Lot specific |
| Conjugation | Unconjugated |
| Purification | Affinity purification |
| Dilution | WB:1:500-1:2000 |
| Range | IF/CC:1:50-1:100 |
| | ELISA:Recommended starting concentration is 1 μ g/mL. Please optimize the concentration based on your specific assay requirements. |
| Formulation | PBS with 0.09% Sodium Azide, 50% Glycerol, pH 7.3. |
| Isotype | IgG |
| Storage Instruction | Store at -20°C for up to 1 year from the date of receipt, and avoid repeat freeze-thaw cycles. |

TARGET INFORMATION

| | |
|---------------------------|---|
| Gene ID | |
| Gene Symbol | |
| Uniprot ID | |
| Immunogen | |
| Immunogen Region | 1-149 |
| Specificity | A synthetic peptide corresponding to a sequence within amino acids 1-149 of human CALM3 (NP_001734.1). |
| Immunogen Sequence | MADQLTEEQIAEFKEAFSLF DKDGDGTITTKELGTVMRSL GQNPTEAELQDMINEVDADG NGTIDFPEFLTMMARKMKDT DSEEEIGREAFRVFDKDGNGY ISAAELRHVMTNLGEKLTDE EVDEMIREADIDGDGQVNYE EFPQMMTAK |



Immunofluorescence analysis of HeLa cells using CALM3 antibody (STJ22865) at dilution of 1:100. Blue: DAPI for nuclear staining.



Western blot analysis of extracts of mouse brain, using CALM3 antibody (STJ22865). Secondary antibody: HRP Goat Anti-Rabbit IgG (H+L) (STJS000856) at 1:10000 dilution. Lysates/proteins: 25 μ g per lane. Blocking buffer: 3% nonfat dry milk in TBST.

This product is suitable for in-vitro studies under the RESEARCH USE ONLY [RUO] licence. This product must not be used as for diagnostic or other medical purposes.
St John's Laboratory Ltd, Knowledge Dock Business Centre, University Way, London, E16 2RD | Tel: 0208 223 3081