

Anti-BSG antibody (286-385) (STJ22839)
STJ22839

GENERAL INFORMATION

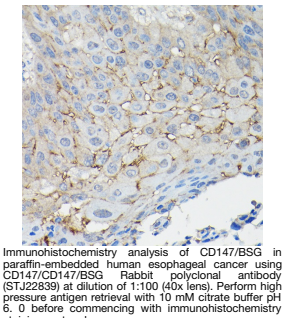
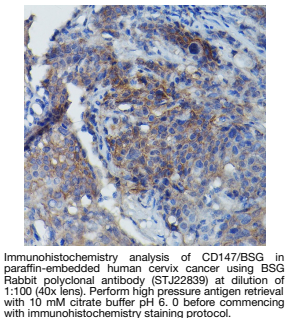
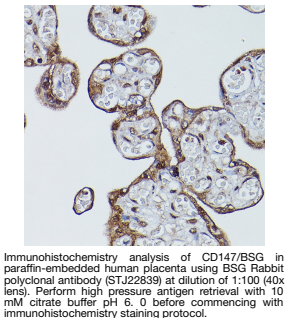
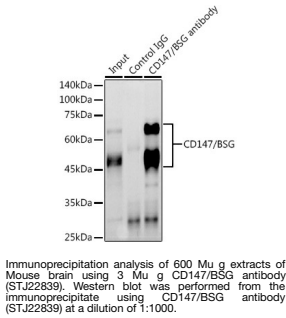
Product Type	Primary antibodies
Short Description	
Applications	WB/IHC-P/IP/ELISA
Host/Source	Rabbit
Reactivity	Human/Mouse/Rat

PRODUCT PROPERTIES

Clonality	Polyclonal
Clone ID	
Concentration	Lot specific
Conjugation	Unconjugated
Purification	Affinity purification
Dilution Range	WB:1:500-1:1000 IHC-P:1:50-1:200 IP:0.5 Mu g-4 Mu g antibody for 400 Mu g-600 Mu g extracts of whole cells ELISA:Recommended starting concentration is 1 Mu g/mL. Please optimize the concentration based on your specific assay requirements.
Formulation	PBS with 0.05% Proclin300, 50% Glycerol, pH 7.3.
Isotype	IgG
Storage Instruction	Store at -20°C for up to 1 year from the date of receipt, and avoid repeat freeze-thaw cycles.

TARGET INFORMATION

Gene ID	682
Gene Symbol	BSG
Uniprot ID	BASI_HUMAN
Immunogen	
Immunogen Region	286-385
Specificity	A synthetic peptide corresponding to a sequence within amino acids 286-385 of human CD147/CD147/BSG (NP_001719.2).
Immunogen Sequence	HIENLNMEADPGQYRCNGTS SKGSDQAIITLRVRSHLAAL WPFLGIVAELVLVTIIFIY EKRRKPEDVLDDDDAGSAPL KSSGQHQNDDKGKNVRQRNSS



This product is suitable for in-vitro studies under the RESEARCH USE ONLY [RUO] licence. This product must not be used as for diagnostic or other medical purposes.
St John's Laboratory Ltd, Knowledge Dock Business Centre, University Way, London, E16 2RD | Tel: 0208 223 3081