

Anti-BRCA2 antibody (1400-1600) (STJ22830)

STJ22830

GENERAL INFORMATION

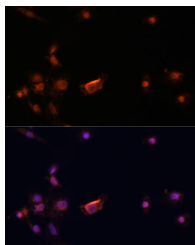
Product Type	Primary antibodies
Short Description	
Applications	WB/IHC-P/IF/ICC/ELISA
Host/Source	Rabbit
Reactivity	Human/Mouse/Rat

PRODUCT PROPERTIES

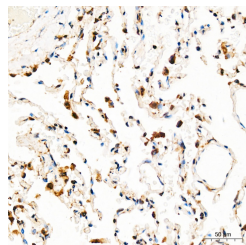
Clonality	Polyclonal
Clone ID	
Concentration	Lot specific
Conjugation	Unconjugated
Purification	Affinity purification
Dilution	WB:1:500-1:1000
Range	IHC-P:1:50-1:200 IF/ICC:1:50-1:200 ELISA:Recommended starting concentration is 1 Mu g/mL. Please optimize the concentration based on your specific assay requirements.
Formulation	PBS with 0.05% Proclin300, 50% Glycerol, pH 7.3.
Isotype	IgG
Storage	Store at -20°C for up to 1 year from the date of receipt, and avoid repeat freeze-thaw cycles.
Instruction	

TARGET INFORMATION

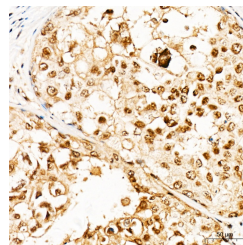
Gene ID	675
Gene Symbol	BRCA2
Uniprot ID	BRCA2_HUMAN
Immunogen	
Immunogen Region	1400-1600
Specificity	Recombinant fusion protein containing a sequence corresponding to amino acids 1400-1600 of BRCA2 (NP_000050.3).
Immunogen Sequence	KESFNKIVNFFDQKPEELHN FLSNSELHSDIRKNKMDILS YEETDIVKHKILKESVPGT GNQLVTFGGQPERDEKIKEP TLLGFHTASGGKVKIAKESL DKVKNLFDEKEQGTSEITSF SHQWAKTLKYREACKDLELA CETIEITAAPKCKEMQNSLN N



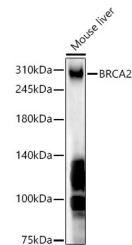
Immunofluorescence analysis of C6 cells using BRCA2 Rabbit polyclonal antibody (STJ22830) at dilution of 1:100. Secondary antibody: Cy3 Goat Anti-Rabbit IgG (H+L) at 1:500 dilution. Blue: DAPI for nuclear staining.



Immunohistochemistry analysis of human lung tissue using BRCA2 Rabbit polyclonal antibody (STJ22830) at a dilution of 1:100 (40x lens). High pressure antigen retrieval was performed with 0.01 M citrate buffer (pH 6.0) prior to immunohistochemistry staining.



Immunohistochemistry analysis of human breast cancer tissue using BRCA2 Rabbit polyclonal antibody (STJ22830) at a dilution of 1:100 (40x lens). High pressure antigen retrieval was performed with 0.01 M citrate buffer (pH 6.0) prior to immunohistochemistry staining.



Western blot analysis of lysates from Mouse liver, using BRCA2 Rabbit polyclonal antibody (STJ22830) at 1:1000 dilution. Secondary antibody: HRP Goat Anti-Rabbit IgG (H+L) (STJSD00856) at 1:10000 dilution. Lysates/proteins: 25 Mu g per lane. Blocking buffer: 3% nonfat dry milk in TBST. Detection: ECL Basic Kit. Exposure time: 90s.

This product is suitable for in-vitro studies under the RESEARCH USE ONLY [RUO] licence. This product must not be used as for diagnostic or other medical purposes.

St John's Laboratory Ltd, Knowledge Dock Business Centre, University Way, London, E16 2RD | Tel: 0208 223 3081