

Anti-BIN1 antibody (230-409) (STJ22799)

STJ22799

GENERAL INFORMATION

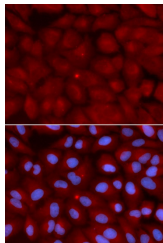
Product Type	Primary antibodies
Short Description	
Applications	WB/IHC-P/IF/ICC/ELISA
Host/Source	Rabbit
Reactivity	Human/Rat

PRODUCT PROPERTIES

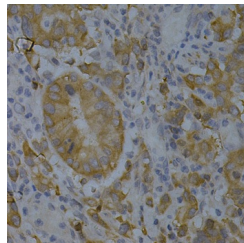
Clonality	Polyclonal
Clone ID	
Concentration	Lot specific
Conjugation	Unconjugated
Purification	Affinity purification
Dilution	WB:1:500-1:1000
Range	IHC-P:1:50-1:200 IF/ICC:1:20-1:50 ELISA:Recommended starting concentration is 1 µg/mL. Please optimize the concentration based on your specific assay requirements.
Formulation	PBS with 0.02% Sodium Azide, 50% Glycerol, pH 7.3.
Isotype	IgG
Storage	Store at -20°C for up to 1 year from the date of receipt, and avoid repeat freeze-thaw cycles.
Instruction	

TARGET INFORMATION

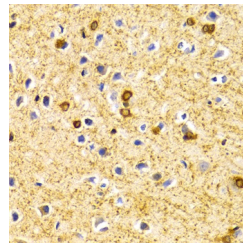
Gene ID	274
Gene Symbol	BIN1
Uniprot ID	BIN1_HUMAN
Immunogen	
Region	230-409
Specificity	Recombinant fusion protein containing a sequence corresponding to amino acids 230-409 of human BIN1 (NP_647601.1).
Immunogen Sequence	QNLNDVLVGLKQHGNTFT VKAQPSDNAPAKGNKSPSP DGSPAATPEIRVNHPEPAG GATPGATLPKSPSQSSLPV VVETFPATVNGTVEGGSGAG RLDLPPGFMFVKVQAQHDYTA TDTDELQLKAGDVVLVIPFQ NPEEQDEGWLGMVKESDWNQ HKELEKCRGVFPENFTERVP



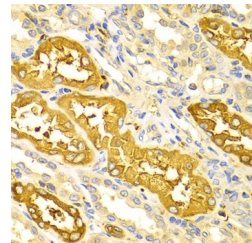
Immunofluorescence analysis of U2OS cells using BIN1 antibody (STJ22799). Blue: DAPI for nuclear staining.



Immunohistochemistry analysis of paraffin-embedded human gastric cancer using BIN1 Antibody (STJ22799) at dilution of 1:200 (40x lens). Perform microwave antigen retrieval with 10 mM PBS buffer pH 7. 2 before commencing with immunohistochemistry staining protocol.



Immunohistochemistry analysis of paraffin-embedded rat brain using BIN1 Antibody (STJ22799) at dilution of 1:100 (40x lens). Perform microwave antigen retrieval with 10 mM PBS buffer pH 7. 2 before commencing with immunohistochemistry staining protocol.



Immunohistochemistry analysis of paraffin-embedded human kidney using BIN1 Antibody (STJ22799) at dilution of 1:100 (40x lens). Perform microwave antigen retrieval with 10 mM PBS buffer pH 7. 2 before commencing with immunohistochemistry staining protocol.

This product is suitable for in-vitro studies under the RESEARCH USE ONLY [RUO] licence. This product must not be used as for diagnostic or other medical purposes.
St John's Laboratory Ltd, Knowledge Dock Business Centre, University Way, London, E16 2RD | Tel: 0208 223 3081