

Anti-Bid antibody (1-195) (STJ22797)
STJ22797

GENERAL INFORMATION

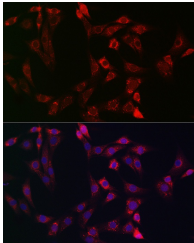
Product Type	Primary antibodies
Short Description	
Applications	WB/IF/ICC/ELISA
Host/Source	Rabbit
Reactivity	Human/Mouse/Rat

PRODUCT PROPERTIES

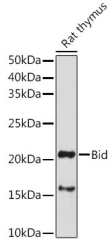
Clonality	Polyclonal
Clone ID	
Concentration	Lot specific
Conjugation	Unconjugated
Purification	Affinity purification
Dilution	WB: 1:500-1:1000
Range	IF/CC: 1:50-1:200 ELISA: Recommended starting concentration is 1 µg/mL. Please optimize the concentration based on your specific assay requirements.
Formulation	PBS with 0.05% Proclin300, 50% Glycerol, pH 7.3.
Isotype	IgG
Storage Instruction	Store at -20°C for up to 1 year from the date of receipt, and avoid repeat freeze-thaw cycles.

TARGET INFORMATION

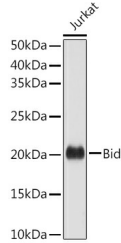
Gene ID	637
Gene Symbol	BID
Uniprot ID	BID_HUMAN
Immunogen	
Immunogen Region	1-195
Specificity	Recombinant fusion protein containing a sequence corresponding to amino acids 1-195 of human Bid (NP_001187.1).
Immunogen Sequence	MDCEVNNGSSLRDECITNLL VFGFLQSCSDNSFRRELDAL GHLPVLAPQWEGYDELQTD GNRSSHSLRGRIEADSESQE DIIRNIARHLAQVGDSDMDRS IPPGLVNLGLALQLRNTSRSE EDNRNRLATALEQLLQAYPR DMEKEKTMVLVALLAKKVA SHTPSLLRDVFTTVNFQNG NRRTYVRLARNGMD



Immunofluorescence analysis of NIH-3T3 cells using Bid Rabbit polyclonal antibody (STJ22797) at dilution of 1:100 (40x lens). Secondary antibody: Cy3 Goat Anti-Rabbit IgG (H+L) at 1:500 dilution. Blue: DAPI for nuclear staining.



Western blot analysis of lysates from Rat thymus, using Bid Rabbit polyclonal antibody (STJ22797) at 1:1000 dilution. Secondary antibody: HRP Goat Anti-Rabbit IgG (H+L) (STJ5000856) at 1:10000 dilution. Lysates/proteins: 25 µg per lane. Blocking buffer: 3% nonfat dry milk in TBST. Detection: ECL Enhanced Kit. Exposure time: 180s.



Western blot analysis of lysates from Jurkat cells, using Bid Rabbit polyclonal antibody (STJ22797) at 1:1000 dilution. Secondary antibody: HRP Goat Anti-Rabbit IgG (H+L) (STJ5000856) at 1:10000 dilution. Lysates/proteins: 25 µg per lane. Blocking buffer: 3% nonfat dry milk in TBST. Detection: ECL Basic Kit. Exposure time: 10s.

This product is suitable for in-vitro studies under the RESEARCH USE ONLY [RUO] licence. This product must not be used as for diagnostic or other medical purposes.
St John's Laboratory Ltd, Knowledge Dock Business Centre, University Way, London, E16 2RD | Tel: 0208 223 3081