

Anti-ATG7 antibody (500-676) (STJ22713)

STJ22713

GENERAL INFORMATION

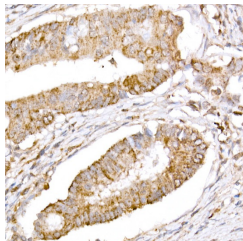
Product Type	Primary antibodies
Short Description	
Applications	IHC-P/IF/ICC/ELISA
Host/Source	Rabbit
Reactivity	Human/Mouse/Rat

PRODUCT PROPERTIES

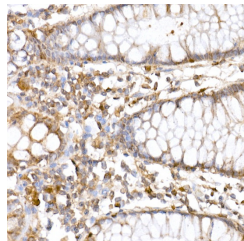
Clonality	Polyclonal
Clone ID	
Concentration	Lot specific
Conjugation	Unconjugated
Purification	Affinity purification
Dilution	IHC-P:1:50-1:200
Range	IF/CC:1:50-1:200
	ELISA:Recommended starting concentration is 1 μ g/mL. Please optimize the concentration based on your specific assay requirements.
Formulation	PBS with 0.09% Sodium Azide, 50% Glycerol, pH 7.3.
Isotype	IgG
Storage Instruction	Store at -20°C for up to 1 year from the date of receipt, and avoid repeat freeze-thaw cycles.

TARGET INFORMATION

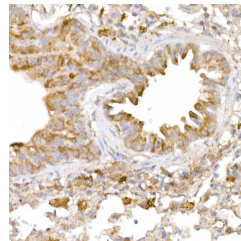
Gene ID	10533
Gene Symbol	ATG7
Uniprot ID	ATG7_HUMAN
Immunogen	
Immunogen Region	500-676
Specificity	Recombinant fusion protein containing a sequence corresponding to amino acids 500-676 of human ATG7 (NP_006386.1).
Immunogen Sequence	LGFDTFVVMRHGLKPKQGG AGDLCPNHPVASADLLGSSL FANIPGYKLGCYFCNDWVAP GDSTRDRTLDDQCTVSRPGL AVIAGALAVELMVSVLQHPE GGYAIASSDDRMNEPTSL GLVPHQIRGFLSRFDNVLPV SLAFDKCTACSSKVLDDQYER EGFNFLAKVFNSHSL



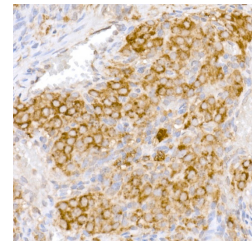
Immunohistochemistry analysis of paraffin-embedded human colon carcinoma using ATG7 rabbit polyclonal antibody (STJ22713) at dilution of 1:50 (40x lens). Perform high pressure antigen retrieval with 10 mM citrate buffer pH 6.0 before commencing with immunohistochemistry staining protocol.



Immunohistochemistry analysis of paraffin-embedded human colon using ATG7 rabbit polyclonal antibody (STJ22713) at dilution of 1:50 (40x lens). Perform high pressure antigen retrieval with 10 mM citrate buffer pH 6.0 before commencing with immunohistochemistry staining protocol.



Immunohistochemistry analysis of paraffin-embedded mouse lung using ATG7 rabbit polyclonal antibody (STJ22713) at dilution of 1:50 (40x lens). Perform high pressure antigen retrieval with 10 mM citrate buffer pH 6.0 before commencing with immunohistochemistry staining protocol.



Immunohistochemistry analysis of paraffin-embedded rat ovary using ATG7 rabbit polyclonal antibody (STJ22713) at dilution of 1:50 (40x lens). Perform high pressure antigen retrieval with 10 mM citrate buffer pH 6.0 before commencing with immunohistochemistry staining protocol.

This product is suitable for in-vitro studies under the RESEARCH USE ONLY [RUO] licence. This product must not be used as for diagnostic or other medical purposes.

St John's Laboratory Ltd, Knowledge Dock Business Centre, University Way, London, E16 2RD | Tel: 0208 223 3081