

Anti-ATF4 antibody (1-351) (STJ22704)

STJ22704

GENERAL INFORMATION

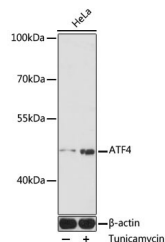
Product Type	Primary antibodies
Short Description	
Applications	WB/IF/ICC/ELISA
Host/Source	Rabbit
Reactivity	Human

PRODUCT PROPERTIES

Clonality	Polyclonal
Clone ID	
Concentration	Lot specific
Conjugation	Unconjugated
Purification	Affinity purification
Dilution	WB:1:500-1:2000
Range	IF/ICC:1:50-1:200
	ELISA:Recommended starting concentration is 1 μ g/mL. Please optimize the concentration based on your specific assay requirements.
Formulation	PBS with 0.02% Sodium Azide, 50% Glycerol, pH 7.3.
Isotype	IgG
Storage Instruction	Store at -20°C for up to 1 year from the date of receipt, and avoid repeat freeze-thaw cycles.

TARGET INFORMATION

Gene ID	468
Gene Symbol	ATF4
Uniprot ID	ATF4_HUMAN
Immunogen	
Immunogen Region	1-351
Specificity	Recombinant fusion protein containing a sequence corresponding to amino acids 1-351 of human ATF4 (NP_001666.2).
Immunogen Sequence	MTEMSFLSSEVLVGDLMSPF DQSGLGAEESLGLDDYLEV AKHFKPHGFSSDKAKAGSSE WLAVDGLVSPSNNSKEDAFS GTDWMLEKMDLKEFDLDALL GIDDLTMDPDDLTLDDTC DLFAPLVQETNKQPPQTVNP IGHLPESLT KPDQVAPFTFL QPLPLSPGVLSSPTDHSFSL ELGSEVDITEGDRKPDYTAY VAMIPQCIKEEDTPSDNSG ICMSPESYLGSPQHSPSTR



Western blot analysis of lysates from HeLa cells, using ATF4 Rabbit polyclonal antibody (STJ22704) at 1:1000 dilution. HeLa cells were treated by tunicamycin (2 μ g/mL) for 8 hours. Secondary antibody: HRP Goat Anti-Rabbit IgG (H+L) (STJS000858) at 1:10000 dilution. Lysates/proteins: 25 μ g per lane. Blocking buffer: 3% nonfat dry milk in TBST. Detection: ECL Enhanced Kit. Exposure time: 3min.

This product is suitable for in-vitro studies under the RESEARCH USE ONLY [RUO] licence. This product must not be used as for diagnostic or other medical purposes.
St John's Laboratory Ltd, Knowledge Dock Business Centre, University Way, London, E16 2RD | Tel: 0208 223 3081