

Anti-APOH antibody (21-345) (STJ22654)

STJ22654

GENERAL INFORMATION

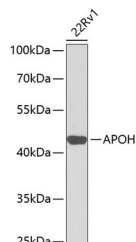
Product Type	Primary antibodies
Short Description	
Applications	WB/IF/ICC/ELISA
Host/Source	Rabbit
Reactivity	Human/Mouse

PRODUCT PROPERTIES

Clonality	Polyclonal
Clone ID	
Concentration	Lot specific
Conjugation	Unconjugated
Purification	Affinity purification
Dilution	WB:1:500-1:2000
Range	IF/ICC:1:50-1:200
	ELISA:Recommended starting concentration is 1 Mu g/mL. Please optimize the concentration based on your specific assay requirements.
Formulation	PBS with 0.02% Sodium Azide, 50% Glycerol, pH 7.3.
Isotype	IgG
Storage Instruction	Store at -20°C for up to 1 year from the date of receipt, and avoid repeat freeze-thaw cycles.

TARGET INFORMATION

Gene ID	350
Gene Symbol	APOH
Uniprot ID	APOH_HUMAN
Immunogen	
Immunogen Region	21-345
Specificity	Recombinant fusion protein containing a sequence corresponding to amino acids 21-345 of human APOH (NP_000033.2).
Immunogen Sequence	RTCPKPDDLFPSTVVPLKTF YEPGEEITYSCKPGYVSRGG MRKFICPLTGLWPINTLKCT PRVCPFAGILENGAVRYTTF EYPNTISFSCNTGFYLNAD SAKCTEEGKWSELPVCAPI ICPPPSIPTFATLRVYKPSA GNNSLYRDTAVFECLPQHAM FGNDTITCTTHGNWTKLPEC REVKCPFPSRPDNGFVNYP KPTLYYKDKATFGCHDGYSL DGPEEIECTKLGNWSAMPS



Western blot analysis of lysates from 22Rv1 cells, using APOH Rabbit polyclonal antibody (STJ22654) at 1:1000 dilution. Secondary antibody: HRP Goat Anti-Rabbit IgG (H+L) (STJ5000856) at 1:10000 dilution. Lysates/proteins: 25 Mu g per lane. Blocking buffer: 3% nonfat dry milk in TBST. Detection: ECL Basic Kit. Exposure time: 30s.

This product is suitable for in-vitro studies under the RESEARCH USE ONLY [RUO] licence. This product must not be used as for diagnostic or other medical purposes.

St John's Laboratory Ltd, Knowledge Dock Business Centre, University Way, London, E16 2RD | Tel: 0208 223 3081