

Anti-AOX1 antibody (340-590) (STJ22625)
STJ22625

GENERAL INFORMATION

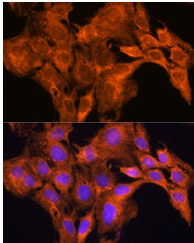
Product Type	Primary antibodies
Short Description	
Applications	WB/IF/ICC/ELISA
Host/Source	Rabbit
Reactivity	Human/Mouse/Rat

PRODUCT PROPERTIES

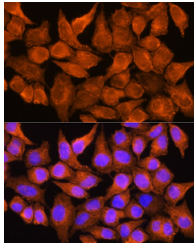
Clonality	Polyclonal
Clone ID	
Concentration	Lot specific
Conjugation	Unconjugated
Purification	Affinity purification
Dilution Range	WB:1:500-1:2000 IF/ICC:1:50-1:200 ELISA:Recommended starting concentration is 1 μ g/mL. Please optimize the concentration based on your specific assay requirements.
Formulation	PBS with 0.02% Sodium Azide, 50% Glycerol, pH 7.3.
Isotype	IgG
Storage Instruction	Store at -20°C for up to 1 year from the date of receipt, and avoid repeat freeze-thaw cycles.

TARGET INFORMATION

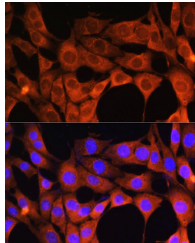
Gene ID	316
Gene Symbol	AOX1
Uniprot ID	AOXA_HUMAN
Immunogen	
Immunogen Region	340-590
Specificity	Recombinant fusion protein containing a sequence corresponding to amino acids 340-590 of human AOX1 (NP_001150.3).
Immunogen Sequence	HLGTLAGSQIRNMA SLGGHI ISRH PDS DLNPILAVGNCTL NLLSKEGKRQIPLNEQFLSK CPNADLKPQEILVSVNIPYS RKWFEVSAFRQAQRQENALA IVNSGMRVFFGEGDGIIREL CISYGGVGPATICA KN SCQK LIGRHWNEQMLDIACRLILN EVSLLGSAPGGKVEFKRTL I ISFLFKFYLEVSQILKKMDP VHYP SLAD KYESAEDLH SK HHCSTLKYQNIGPKQHPED



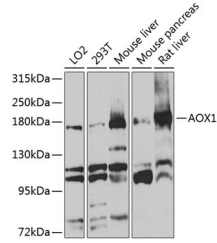
Immunofluorescence analysis of C6 cells using AOX1 Rabbit polyclonal antibody (STJ22625) at dilution of 1:100. Blue: DAPI for nuclear staining.



Immunofluorescence analysis of HeLa cells using AOX1 Rabbit polyclonal antibody (STJ22625) at dilution of 1:100. Blue: DAPI for nuclear staining.



Immunofluorescence analysis of NIH/3T3 cells using AOX1 Rabbit polyclonal antibody (STJ22625) at dilution of 1:100. Blue: DAPI for nuclear staining.



Western blot analysis of extracts of various cell lines, using AOX1 antibody (STJ22625) at 1:1000 dilution. Secondary antibody: HRP Goat Anti-Rabbit IgG (H+L) (STJ5000856) at 1:10000 dilution. Lysates/proteins: 25 μ g per lane. Blocking buffer: 3% nonfat dry milk in TBST. Detection: ECL Basic Kit. Exposure time: 60s.

This product is suitable for in-vitro studies under the RESEARCH USE ONLY [RUO] licence. This product must not be used as for diagnostic or other medical purposes.
St John's Laboratory Ltd, Knowledge Dock Business Centre, University Way, London, E16 2RD | Tel: 0208 223 3081