

Anti-ANGPTL4 antibody (26-170) (STJ22612)

STJ22612

GENERAL INFORMATION

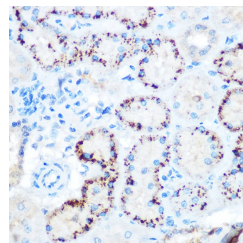
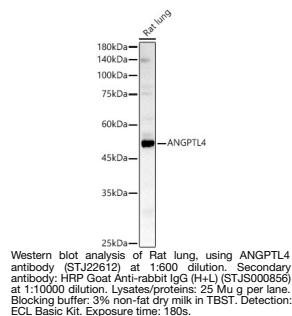
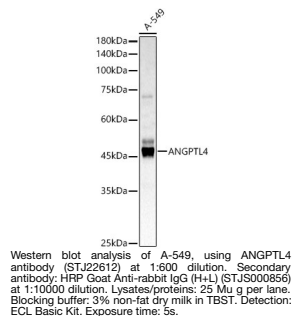
Product Type	Primary antibodies
Short Description	
Applications	WB/IHC-P/IF/ICC/ELISA
Host/Source	Rabbit
Reactivity	Human/Mouse/Rat

PRODUCT PROPERTIES

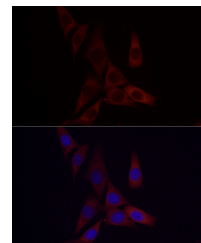
Clonality	Polyclonal
Clone ID	
Concentration	Lot specific
Conjugation	Unconjugated
Purification	Affinity purification
Dilution Range	WB: 1:500-1:1000 IHC-P: 1:50-1:200 IF/ICC: 1:50-1:200 ELISA: Recommended starting concentration is 1 µg/mL. Please optimize the concentration based on your specific assay requirements.
Formulation	PBS with 0.09% Sodium Azide, 50% Glycerol, pH 7.3.
Isotype	IgG
Storage	Store at -20°C for up to 1 year from the date of receipt, and avoid repeat freeze-thaw cycles.
Instruction	

TARGET INFORMATION

Gene ID	51129
Gene Symbol	ANGPTL4
Uniprot ID	ANGL4_HUMAN
Immunogen	26-170
Region	
Specificity	Recombinant fusion protein containing a sequence corresponding to amino acids 26-170 of human ANGPTL4 (NP_647475.1).
Immunogen Sequence	GPVQSKSPRFASWDEMNVLA HGLLQLGQGLREHAERTRSQ LSALERRLSACGSACQGTEG STDPLAPESRDPEVLHSL QTQLKAQNSRIQQLFHKVAQ QQRHLEKQHLRIQHLQSQFG LLDHKHLDHEVAKPARRKRL PEMAQ



Immunohistochemistry analysis of paraffin-embedded rat kidney using ANGPTL4 rabbit polyclonal antibody (STJ22612) at dilution of 1:100 (40x lens). Perform microwave antigen retrieval with 10 mM Tris/EDTA buffer pH 9.0 before commencing with immunohistochemistry staining protocol.



Immunofluorescence analysis of NIH/3T3 cells using ANGPTL4 rabbit polyclonal antibody (STJ22612) at dilution of 1:50 (40x lens). Blue: DAPI for nuclear staining.

This product is suitable for in-vitro studies under the RESEARCH USE ONLY [RUO] licence. This product must not be used as for diagnostic or other medical purposes.
St John's Laboratory Ltd, Knowledge Dock Business Centre, University Way, London, E16 2RD | Tel: 0208 223 3081