

Anti-AMPD1 antibody (50-260) (STJ22603)
STJ22603

GENERAL INFORMATION

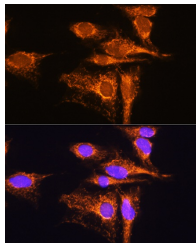
Product Type	Primary antibodies
Short Description	
Applications	WB/IF/ICC/ELISA
Host/Source	Rabbit
Reactivity	Human/Mouse/Rat

PRODUCT PROPERTIES

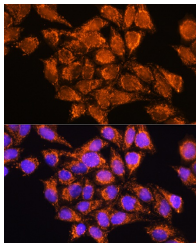
Clonality	Polyclonal
Clone ID	
Concentration	Lot specific
Conjugation	Unconjugated
Purification	Affinity purification
Dilution	WB:1:500-1:2000
Range	IF/CC:1:50-1:200
	ELISA:Recommended starting concentration is 1 Mu g/mL. Please optimize the concentration based on your specific assay requirements.
Formulation	PBS with 0.02% Sodium Azide, 50% Glycerol, pH 7.3.
Isotype	IgG
Storage Instruction	Store at -20°C for up to 1 year from the date of receipt, and avoid repeat freeze-thaw cycles.

TARGET INFORMATION

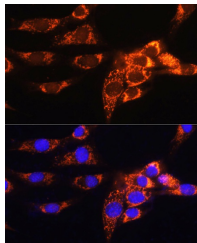
Gene ID	270
Gene Symbol	AMPD1
Uniprot ID	AMPD1_HUMAN
Immunogen	
Immunogen Region	50-260
Specificity	Recombinant fusion protein containing a sequence corresponding to amino acids 50-260 of human AMPD1 (NP_001166097.1).
Immunogen Sequence	AEKVFASEVKDEGGRQEISP FDVDEICPISHHEMQAHIFH LETLSTSTEARRKKRFQGRK TVNLSIPLSETSSSTKLSHID EYISSPTYQTVPDFQRVQI TGDYASGVTVEFIVCKGL YRALCIREKYMQKSFRQFPK TPSKYLRNIDGEAWVANESF YPVFTPPVKKGEDPFRFDNL PENLGYHLKMKDGVVYVYPN EAAVSKDEPKP



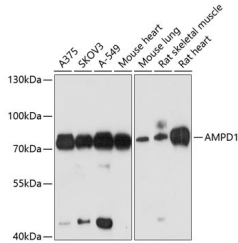
Immunofluorescence analysis of C6 cells using AMPD1 Rabbit polyclonal antibody (STJ22603) at dilution of 1:100. Blue: DAPI for nuclear staining.



Immunofluorescence analysis of HeLa cells using AMPD1 Rabbit polyclonal antibody (STJ22603) at dilution of 1:100. Blue: DAPI for nuclear staining.



Immunofluorescence analysis of NIH/3T3 cells using AMPD1 Rabbit polyclonal antibody (STJ22603) at dilution of 1:100. Blue: DAPI for nuclear staining.



Western blot analysis of extracts of various cell lines, using AMPD1 antibody (STJ22603) at 1:3000 dilution. Secondary antibody: HRP Goat Anti-Rabbit IgG (H+L) (STJ5000856) at 1:10000 dilution. Lysates/proteins: 25 Mu g per lane. Blocking buffer: 3% nonfat dry milk in TBST. Detection: ECL Basic Kit. Exposure time: 90s.

This product is suitable for in-vitro studies under the RESEARCH USE ONLY [RUO] licence. This product must not be used as for diagnostic or other medical purposes.
St John's Laboratory Ltd, Knowledge Dock Business Centre, University Way, London, E16 2RD | Tel: 0208 223 3081