

Anti-ALDH2 antibody (321-480) (STJ22581)

STJ22581

GENERAL INFORMATION

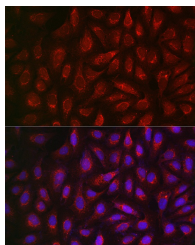
Product Type	Primary antibodies
Short Description	
Applications	WB/IHC-P/IF/ICC/ELISA
Host/Source	Rabbit
Reactivity	Human/Mouse/Rat

PRODUCT PROPERTIES

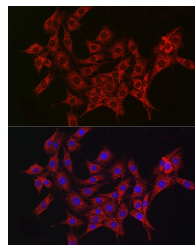
Clonality	Polyclonal
Clone ID	
Concentration	Lot specific
Conjugation	Unconjugated
Purification	Affinity purification
Dilution	WB:1:500-1:1000
Range	IHC-P:1:50-1:200 IF/ICC:1:50-1:200 ELISA:Recommended starting concentration is 1 μ g/mL. Please optimize the concentration based on your specific assay requirements.
Formulation	PBS with 0.05% Proclin300, 50% Glycerol, pH 7.3.
Isotype	IgG
Storage	Store at -20°C for up to 1 year from the date of receipt, and avoid repeat freeze-thaw cycles.
Instruction	

TARGET INFORMATION

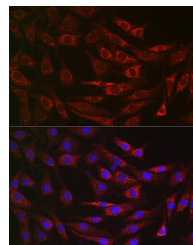
Gene ID	217
Gene Symbol	ALDH2
Uniprot ID	ALDH2_HUMAN
Immunogen	
Region	321-480
Specificity	Recombinant fusion protein containing a sequence corresponding to amino acids 321-480 of human ALDH2 (NP_000681.2).
Immunogen Sequence	AGSRFTVQEDIYDEFVERSV ARAKSRVVGNPFDSEKQGP QVDETQFKILGYINTGKQE GAKLLCGGGIAADRGYFIQP TVFGDVQDGMTIAKEEIFGP VMQILKFKTIEEVGRANNS TYGLAAAVFTKDLKANYLS QALQAGTVVWNCYDVFQAQS



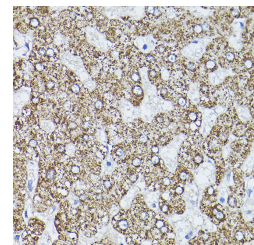
Immunofluorescence analysis of U2OS cells using ALDH2 Rabbit polyclonal antibody (STJ22581) at dilution of 1:200 (40x lens). Blue: DAPI for nuclear staining.



Immunofluorescence analysis of PC-12 cells using ALDH2 Rabbit polyclonal antibody (STJ22581) at dilution of 1:200 (40x lens). Blue: DAPI for nuclear staining.



Immunofluorescence analysis of NIH/3T3 cells using ALDH2 Rabbit polyclonal antibody (STJ22581) at dilution of 1:200 (40x lens). Blue: DAPI for nuclear staining.



Immunohistochemistry analysis of paraffin-embedded human liver using ALDH2 Rabbit polyclonal antibody (STJ22581) at dilution of 1:200 (40x lens). Perform high pressure antigen retrieval with 10 mM citrate buffer pH 6.0 before commencing with immunohistochemistry staining protocol.

This product is suitable for in-vitro studies under the RESEARCH USE ONLY [RUO] licence. This product must not be used as for diagnostic or other medical purposes.
St John's Laboratory Ltd, Knowledge Dock Business Centre, University Way, London, E16 2RD | Tel: 0208 223 3081