

Anti-ACPP antibody (33-386) (STJ22491)
STJ22491

GENERAL INFORMATION

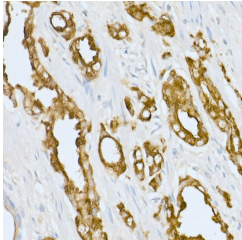
Product Type	Primary antibodies
Short Description	
Applications	WB/IHC-P/ELISA
Host/Source	Rabbit
Reactivity	Human/Mouse/Rat

PRODUCT PROPERTIES

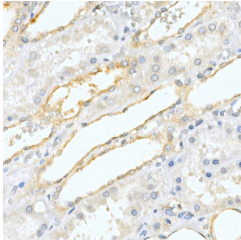
Clonality	Polyclonal
Clone ID	
Concentration	Lot specific
Conjugation	Unconjugated
Purification	Affinity purification
Dilution	WB: 1:100-1:500
Range	IHC-P: 1:50-1:200 ELISA: Recommended starting concentration is 1 µg/mL. Please optimize the concentration based on your specific assay requirements.
Formulation	PBS with 0.02% Sodium Azide, 50% Glycerol, pH 7.3.
Isotype	IgG
Storage Instruction	Store at -20°C for up to 1 year from the date of receipt, and avoid repeat freeze-thaw cycles.

TARGET INFORMATION

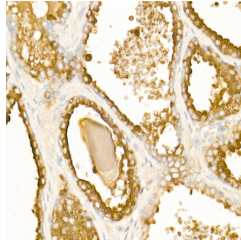
Gene ID	55
Gene Symbol	ACPP3
Uniprot ID	PPAP_HUMAN
Immunogen	
Immunogen Region	33-386
Specificity	Recombinant fusion protein containing a sequence corresponding to amino acids 33-386 of human PAP/Prostatic Acid Phosphatase (ACPP) (NP_001090.2).
Immunogen Sequence	KELKFVTLVFRHGDRSPIDT FPTDPIKESSWPQGFGLTQ LGMEQHYELGEYIRKRYRKFLNESYKHEQVYIRSTDVEDRT LMSAMTNLAALFPPEGVSIW NPILLWQPIPVHTVPLSEDDQ LLYLPFRNCPRFQLESETL KSEEFQKRLHPYKDFIATLG KLSGLHGGDLFGIWSKVYDP LYCESVHNFTLPSWATEDTM TKLRELSLSLLSLYGIHKQ KEKSRLQGGVLVNEILNHM



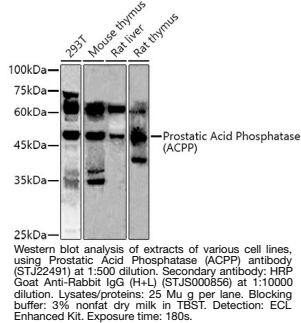
Immunohistochemistry analysis of paraffin-embedded human prostate cancer using Prostatic Acid Phosphatase (ACPP) Rabbit polyclonal antibody (STJ22491) at dilution of 1:50 (40x lens). Perform high pressure antigen retrieval with 10 mM citrate buffer pH 6.0 before commencing with immunohistochemistry staining protocol.



Immunohistochemistry analysis of paraffin-embedded human kidney using Prostatic Acid Phosphatase (ACPP) Rabbit polyclonal antibody (STJ22491) at dilution of 1:50 (40x lens). Perform high pressure antigen retrieval with 10 mM citrate buffer pH 6.0 before commencing with immunohistochemistry staining protocol.



Immunohistochemistry analysis of paraffin-embedded Human benign prostatic hyperplasia using Prostatic Acid Phosphatase (ACPP) Rabbit polyclonal antibody (STJ22491) at dilution of 1:50 (40x lens). Perform high pressure antigen retrieval with 10 mM citrate buffer pH 6.0 before commencing with immunohistochemistry staining protocol.



This product is suitable for in-vitro studies under the RESEARCH USE ONLY [RUO] licence. This product must not be used as for diagnostic or other medical purposes.
St John's Laboratory Ltd, Knowledge Dock Business Centre, University Way, London, E16 2RD | Tel: 0208 223 3081