

Anti-ACP5 antibody (76-325) (STJ22490)

GENERAL INFORMATION

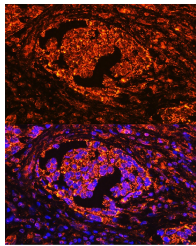
Product Type	Primary antibodies
Short Description	
Applications	WB/IHC-P/IF/ICC/ELISA
Host/Source	Rabbit
Reactivity	Human/Mouse/Rat

PRODUCT PROPERTIES

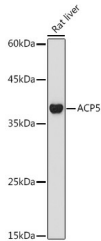
Clonality	Polyclonal
Clone ID	
Concentration	Lot specific
Conjugation	Unconjugated
Purification	Affinity purification
Dilution	WB:1:500-1:1000
Range	IHC-P:1:100-1:500 IF/ICC:1:50-1:200 ELISA:Recommended starting concentration is 1 Mu g/mL. Please optimize the concentration based on your specific assay requirements.
Formulation	PBS with 0.09% Sodium Azide, 50% Glycerol, pH 7.3.
Isotype	IgG
Storage	Store at-20°C for up to 1 year from the date of receipt, and avoid repeat freeze-thaw cycles.
Instruction	

TARGET INFORMATION

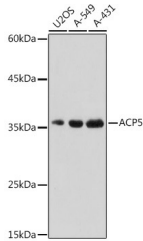
Gene ID	54
Gene Symbol	ACP5
Uniprot ID	PPA5_HUMAN
Immunogen	
Immunogen Region	76-325
Specificity	Recombinant fusion protein containing a sequence corresponding to amino acids 76-325 of human ACP5 (NP_001602.1).
Immunogen Sequence	TGVQDINDKRFQETFEVFS DRSLRKVPWYVLAGNHDHLG NVSAQIAYSKISKRWNFSP FYRLHFQIPQTNVSVAFML DTVTLCGNSDDFLSQQPERP RDVKLARTQLSWLKQLAAA REDYVLVAGHYPVWSIAEHG PTHCLVKQLRPLLATYGVTA YLCGHHDHNLQYLQDENGVG YVLSGAGNFMPSKRHRQKVP NGYLRPHYGTEDSLGGFAYV EISSKEMTVTYEASGKSL



Immunofluorescence analysis of paraffin-embedded human lung cancer using ACP5 Rabbit polyclonal antibody (STJ22490) at dilution of 1:100 (40x lens). Secondary antibody: Cy3 Goat Anti-Rabbit IgG (H+L) at 1:500 dilution. Blue: DAPI for nuclear staining.



Western blot analysis of lysates from Rat liver, using ACP5 Rabbit polyclonal antibody (STJ22490) at 1:1000 dilution. Secondary antibody: HRP Goat Anti-Rabbit IgG (H+L) (STJS000856) at 1:10000 dilution. Lysates/proteins: 25 Mu g per lane. Blocking buffer: 3% nonfat dry milk in TBST. Detection: ECL Basic Kit. Exposure time: 180s.



Western blot analysis of various lysates using ACP5 Rabbit polyclonal antibody (STJ22490) at 1:500 dilution. Secondary antibody: HRP Goat Anti-Rabbit IgG (H+L) (STJS000856) at 1:10000 dilution. Lysates/proteins: 25 Mu g per lane. Blocking buffer: 3% nonfat dry milk in TBST. Detection: ECL Basic Kit. Exposure time: 1s.