

Anti-ABCC1 antibody (850-1531) (STJ22459)

STJ22459

GENERAL INFORMATION

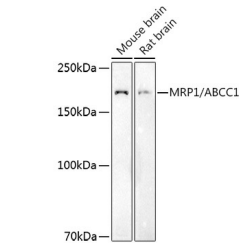
Product Type	Primary antibodies
Short Description	
Applications	WB/IHC-P/IF/ICC/ELISA
Host/Source	Rabbit
Reactivity	Human/Mouse/Rat

PRODUCT PROPERTIES

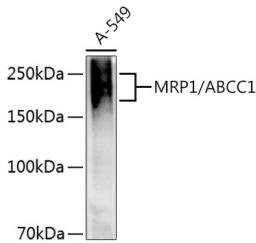
Clonality	Polyclonal
Clone ID	
Concentration	Lot specific
Conjugation	Unconjugated
Purification	Affinity purification
Dilution Range	WB:1:500-1:1000 IHC-P:1:50-1:200 IF/ICC:1:50-1:200 ELISA:Recommended starting concentration is 1 μ g/mL. Please optimize the concentration based on your specific assay requirements.
Formulation	PBS with 0.05% Proclin300, 50% Glycerol, pH 7.3.
Isotype	IgG
Storage	Store at -20°C for up to 1 year from the date of receipt, and avoid repeat freeze-thaw cycles.
Instruction	

TARGET INFORMATION

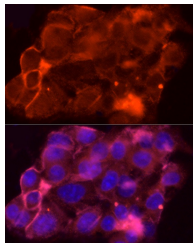
Gene ID	4363
Gene Symbol	ABCC1
Uniprot ID	MRP1_HUMAN
Immunogen	
Immunogen Region	850-1531
Specificity	Recombinant fusion protein containing a sequence corresponding to amino acids 850-960 of human MRP1/ABCC1 (NP_004987.2).
Immunogen Sequence	GSYQELLARDGAFAEFLRTY ASTEQEQDAEENGVTGVSGP GKEAKQMENGMLVTD SAGKQ LQRQLSSSSSYSGDISRHNN STAELQKAEAKKEETWKLME ADKAQTGQVKL



Western blot analysis of extracts of various cell lines, using MRP1/ABCC1 antibody (STJ22459) at 1:500 dilution. Secondary antibody: HRP Goat Anti-rabbit IgG (H+L) (STJS000856) at 1:10000 dilution. Lysates/proteins: 25 μ g per lane. Blocking buffer: 3% non-fat dry milk in TBST. Detection: ECL Basic Kit. Exposure time: 180s.



Western blot analysis of extracts of A-549 cells, using MRP1/ABCC1 antibody (STJ22459) at 1:1000 dilution. Secondary antibody: HRP Goat Anti-rabbit IgG (H+L) (STJS000856) at 1:10000 dilution. Lysates/proteins: 25 μ g per lane. Blocking buffer: 3% non-fat dry milk in TBST. Detection: ECL Enhanced Kit. Exposure time: 180s.



Immunofluorescence analysis of HepG2 cells using MRP1/ABCC1 rabbit polyclonal antibody (STJ22459) at dilution of 1:50 (40x lens). Blue: DAPI for nuclear staining.

This product is suitable for in-vitro studies under the RESEARCH USE ONLY [RUO] licence. This product must not be used as for diagnostic or other medical purposes.
St John's Laboratory Ltd, Knowledge Dock Business Centre, University Way, London, E16 2RD | Tel: 0208 223 3081