

Anti-Abca6 antibody (690-828) (STJ22455)

STJ22455

GENERAL INFORMATION

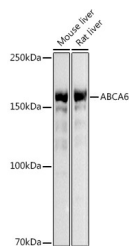
| | |
|--------------------------|--------------------|
| Product Type | Primary antibodies |
| Short Description | |
| Applications | WB/IF/ICC/ELISA |
| Host/Source | Rabbit |
| Reactivity | Human/Mouse/Rat |

PRODUCT PROPERTIES

| | |
|----------------------------|--|
| Clonality | Polyclonal |
| Clone ID | |
| Concentration | Lot specific |
| Conjugation | Unconjugated |
| Purification | Affinity purification |
| Dilution | WB:1:500-1:1000 |
| Range | IF/ICC:1:50-1:200 ELISA:Recommended starting concentration is 1 Mu g/mL. Please optimize the concentration based on your specific assay requirements. |
| Formulation | PBS with 0.05% Proclin300, 50% Glycerol, pH 7.3. |
| Isotype | IgG |
| Storage Instruction | Store at -20°C for up to 1 year from the date of receipt, and avoid repeat freeze-thaw cycles. |

TARGET INFORMATION

| | |
|---------------------------|---|
| Gene ID | 76184 |
| Gene Symbol | Abca6 |
| Uniprot ID | ABCA6_MOUSE |
| Immunogen | |
| Immunogen Region | 690-828 |
| Specificity | Recombinant fusion protein containing a sequence corresponding to amino acids 690-828 of human ABCA6 (NP_525023.2). |
| Immunogen Sequence | RLKCAGSSMFLKRRWGLGYH LSLHRNEICNPEQITSFITH HIPDAKLKTENKEKLVTLP LERTNTFPDLFSDLDKCSDD GVGTGYDISMSTLNEVFMKLE GQSTIEQDFEQVEMIRDSSES LNEMELAHSSFSEMQTAVS |



Western blot analysis of various lysates using (STJ22455) at 1:500 dilution. Secondary antibody: HRP Goat Anti-Rabbit IgG (H+L) (STJ5000856) at 1:10000 dilution. Lysates/proteins: 25 Mu g per lane. Blocking buffer: 3% nonfat dry milk in TBST. Detection: ECL Basic Kit. Exposure time: 3s.

This product is suitable for in-vitro studies under the RESEARCH USE ONLY [RUO] licence. This product must not be used as for diagnostic or other medical purposes.
St John's Laboratory Ltd, Knowledge Dock Business Centre, University Way, London, E16 2RD | Tel: 0208 223 3081