

Anti-Phospho-STMN1-S25 antibody (STJ22421)

STJ22421

GENERAL INFORMATION

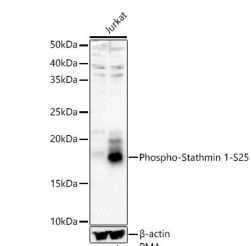
Product Type	Primary antibodies
Short Description	
Applications	WB/IHC-P/ELISA
Host/Source	Rabbit
Reactivity	Human/Mouse/Rat

PRODUCT PROPERTIES

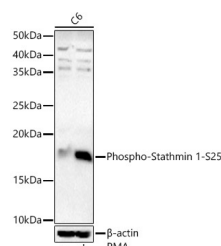
Clonality	Polyclonal
Clone ID	
Concentration	Lot specific
Conjugation	Unconjugated
Purification	Affinity purification
Dilution Range	WB:1:100-1:500 IHC-P:1:50-1:100 ELISA:Recommended starting concentration is 1 µg/mL. Please optimize the concentration based on your specific assay requirements.
Formulation	PBS with 0.05% Proclin300, 50% Glycerol, pH 7.3.
Isotype	IgG
Storage Instruction	Store at -20°C for up to 1 year from the date of receipt, and avoid repeat freeze-thaw cycles.

TARGET INFORMATION

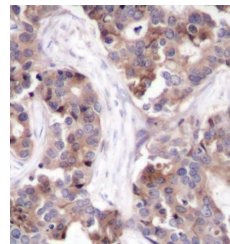
Gene ID	3925
Gene Symbol	STMN1
Uniprot ID	STMN1_HUMAN
Immunogen	ILSPRS
Immunogen Region	
Specificity	A synthetic phosphorylated peptide around S25 of human Stathmin 1 (NP_005554.1).
Immunogen Sequence	ILSPRS



Western blot analysis of various lysates, using Phospho-Stathmin 1-S25 antibody (STJ22421) at 1:400 dilution. Secondary antibody: HRP Goat Anti-rabbit IgG (H+L) (STJS000856) at 1:10000 dilution. Lysates/proteins: 25 µg per lane. Blocking buffer: 3% non-fat dry milk in TBST. Detection: ECL Basic Kit. Exposure time: 60s.



Immunohistochemistry analysis of paraffin-embedded human breast carcinoma using Phospho-Stathmin 1-S25 antibody (STJ22421). Perform microwave antigen retrieval with 10 mM Tris/EDTA buffer pH 9.0 before commencing with immunohistochemistry staining protocol.



This product is suitable for in-vitro studies under the RESEARCH USE ONLY [RUO] licence. This product must not be used as for diagnostic or other medical purposes.
St John's Laboratory Ltd, Knowledge Dock Business Centre, University Way, London, E16 2RD | Tel: 0208 223 3081