

## Anti-Phospho-STAT4-Y693 antibody (STJ22416)

STJ22416

### GENERAL INFORMATION

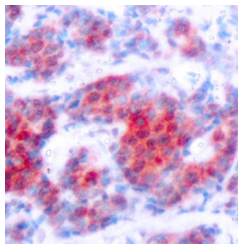
<b>Product Type</b>	Primary antibodies
<b>Short Description</b>	
<b>Applications</b>	WB/IHC-P/ELISA
<b>Host/Source</b>	Rabbit
<b>Reactivity</b>	Human/Mouse/Rat

### PRODUCT PROPERTIES

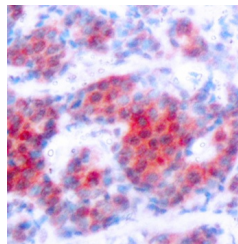
<b>Clonality</b>	Polyclonal
<b>Clone ID</b>	
<b>Concentration</b>	Lot specific
<b>Conjugation</b>	Unconjugated
<b>Purification</b>	Affinity purification
<b>Dilution Range</b>	WB:1:100-1:500 IHC-P:1:50-1:100 ELISA:Recommended starting concentration is 1 µg/mL. Please optimize the concentration based on your specific assay requirements.
<b>Formulation</b>	PBS with 0.02% Sodium Azide, 50% Glycerol, pH 7.3.
<b>Isotype</b>	IgG
<b>Storage Instruction</b>	Store at -20°C for up to 1 year from the date of receipt, and avoid repeat freeze-thaw cycles.

### TARGET INFORMATION

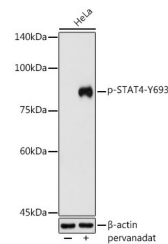
<b>Gene ID</b>	6775
<b>Gene Symbol</b>	STAT4
<b>Uniprot ID</b>	STAT4_HUMAN
<b>Immunogen</b>	KGYVP
<b>Immunogen Region</b>	
<b>Specificity</b>	A synthetic phosphorylated peptide around Y693 of human STAT4 (NP_003142.1).
<b>Immunogen Sequence</b>	KGYVP



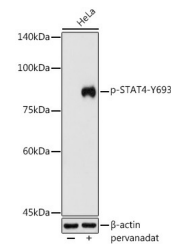
Western blot analysis of extracts of HeLa cells, using Phospho-STAT4-Y693 antibody (STJ22416) at 1:500 dilution. HeLa cells were treated by Pervanadate (1 nM) at 37 °C for 30 minutes after serum-starvation overnight. Secondary antibody: HRP Goat Anti-rabbit IgG (H+L) at 1:10000 dilution. Lysates/proteins: 25µg per lane. Blocking buffer: 3% non-fat dry milk in TBST. Detection: ECL Basic Kit. Exposure time: 30s.



Immunohistochemistry analysis of Phospho-STAT4-Y693 in paraffin-embedded human breast carcinoma using Phospho-STAT4-Y693 Rabbit polyclonal antibody (STJ22416). Perform microwave antigen retrieval with 10 mM Tris/EDTA buffer pH 9.0 before commencing with immunohistochemistry staining protocol.



Immunohistochemistry of paraffin-embedded human breast carcinoma using Phospho-STAT4-Y693 antibody (STJ22416). Perform microwave antigen retrieval with 10 mM Tris/EDTA buffer pH 9.0 before commencing with immunohistochemistry staining protocol.



Western blot analysis of lysates from HeLa cells, using Phospho-STAT4-Y693 Rabbit polyclonal antibody (STJ22416) at 1:500 dilution. HeLa cells were treated by Pervanadate (1 nM) at 37 °C for 30 minutes after serum-starvation overnight. Secondary antibody: HRP Goat Anti-Rabbit IgG (H+L) (STJS000856) at 1:10000 dilution. Lysates/proteins: 25 µg per lane. Blocking buffer: 3% nonfat dry milk in TBST. Detection: ECL Basic Kit. Exposure time: 30s.