

Anti-Phospho-SMC1A-S957 antibody (STJ22400)

STJ22400

GENERAL INFORMATION

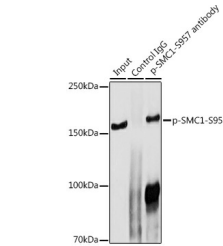
Product Type	Primary antibodies
Short Description	
Applications	WB/IHC-P/IP/ELISA
Host/Source	Rabbit
Reactivity	Human/Mouse/Rat

PRODUCT PROPERTIES

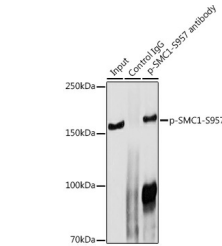
Clonality	Polyclonal
Clone ID	
Concentration	Lot specific
Conjugation	Unconjugated
Purification	Affinity purification
Dilution Range	WB:1:500-1:2000 IHC-P:1:50-1:200 IP:0.5 Mu g-4 Mu g antibody for 200 Mu g-400 Mu g extracts of whole cells ELISA:Recommended starting concentration is 1 Mu g/mL. Please optimize the concentration based on your specific assay requirements.
Formulation	PBS with 0.02% Sodium Azide, 50% Glycerol, pH 7.3.
Isotype	IgG
Storage Instruction	Store at-20°C for up to 1 year from the date of receipt, and avoid repeat freeze-thaw cycles.

TARGET INFORMATION

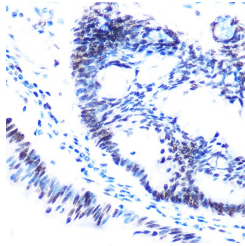
Gene ID	8243
Gene Symbol	SMC1A
Uniprot ID	SMC1A_HUMAN
Immunogen	GSSQG
Immunogen Region	
Specificity	A synthetic phosphorylated peptide around S957 of human SMC1A (NP_006297.2).
Immunogen Sequence	GSSQG



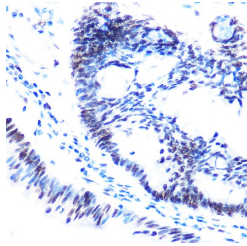
Western blot analysis of extracts of various cell lines, using Phospho-SMC1-S957 antibody (STJ22400) at 1:1000 dilution. HeLa and NIH/3T3 cells were treated by UV for 15-30 minutes. Secondary antibody: HRP Goat Anti-rabbit IgG (H+L) at 1:10000 dilution. Lysates/proteins: 25ug per lane. Blocking buffer: 3% BSA. Detection: ECL Basic Kit. Exposure time: 3s.



Immunoprecipitation analysis of 300 Mu g extracts of HeLa cells using 3 Mu g Phospho-SMC1-S957 antibody (STJ22400). Western blot was performed from the immunoprecipitate using Phospho-SMC1-S957 antibody (STJ22400) at a dilution of 1:1000.



Western blot analysis of extracts of HeLa cells, using Phospho-SMC1-S957 polyclonal antibody (STJ22400) at 1:1000 dilution or SMC1A antibody (A7008). HeLa cells were treated by UV at room temperature for 15-30 minutes. Secondary antibody: HRP Goat Anti-rabbit IgG (H+L) at 1:10000 dilution. Lysates/proteins: 25ug per lane. Blocking buffer: 3% BSA. Detection: ECL Basic Kit. Exposure time: 3s.



Immunohistochemistry analysis of Phospho-SMC1-S957 in paraffin-embedded human colon carcinoma using Phospho-SMC1-S957 Rabbit polyclonal antibody (STJ22400) at dilution of 1:100 (40x lens). Perform high pressure antigen retrieval with 10 mM citrate buffer pH 6.0 before commencing with immunohistochemistry staining protocol.

This product is suitable for in-vitro studies under the RESEARCH USE ONLY [RUO] licence. This product must not be used as for diagnostic or other medical purposes.
St John's Laboratory Ltd, Knowledge Dock Business Centre, University Way, London, E16 2RD | Tel: 0208 223 3081