

Anti-Phospho-RB1-S811 antibody (STJ22370)

STJ22370

GENERAL INFORMATION

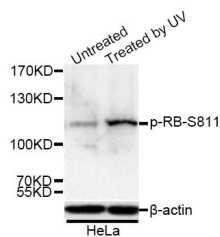
Product Type	Primary antibodies
Short Description	
Applications	WB/ELISA
Host/Source	Rabbit
Reactivity	Human

PRODUCT PROPERTIES

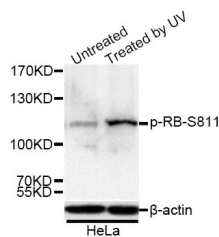
Clonality	Polyclonal
Clone ID	
Concentration	Lot specific
Conjugation	Unconjugated
Purification	Affinity purification
Dilution Range	WB:1:1000-1:2000 ELISA:Recommended starting concentration is 1 µg/mL. Please optimize the concentration based on your specific assay requirements.
Formulation	PBS with 0.02% Sodium Azide, 50% Glycerol, pH 7.3.
Isotype	IgG
Storage Instruction	Store at -20°C for up to 1 year from the date of receipt, and avoid repeat freeze-thaw cycles.

TARGET INFORMATION

Gene ID	5925
Gene Symbol	RB1
Uniprot ID	RB_HUMAN
Immunogen	LKSPY
Immunogen Region	
Specificity	A synthetic phosphorylated peptide around S811 of human RB (NP_000312.2).
Immunogen Sequence	LKSPY



Western blot analysis of extracts of HeLa cells, using Phospho-RB-S811 antibody (STJ22370) at 1:1000 dilution. HeLa cells were treated by UV for 15-30 minutes. Secondary antibody: HRP Goat Anti-rabbit IgG (H+L) at 1:10000 dilution. Lysates/proteins: 25µg per lane. Blocking buffer: 3% BSA.



Western blot analysis of extracts of HeLa cells, using Phospho-RB-S811 antibody (STJ22370) at 1:1000 dilution. HeLa cells were treated by UV for 15-30 minutes. Secondary antibody: HRP Goat Anti-Rabbit IgG (H+L) (STJ5000856) at 1:10000 dilution. Lysates/proteins: 25 µg per lane. Blocking buffer: 3% BSA.

This product is suitable for in-vitro studies under the RESEARCH USE ONLY [RUO] licence. This product must not be used as for diagnostic or other medical purposes.
St John's Laboratory Ltd, Knowledge Dock Business Centre, University Way, London, E16 2RD | Tel: 0208 223 3081