

Anti-Phospho-RB1-S795 antibody (STJ22369)

STJ22369

GENERAL INFORMATION

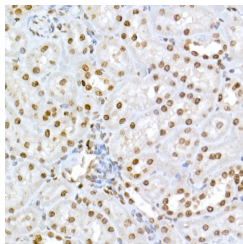
Product Type	Primary antibodies
Short Description	
Applications	WB/IHC-P/ELISA
Host/Source	Rabbit
Reactivity	Human/Mouse/Rat

PRODUCT PROPERTIES

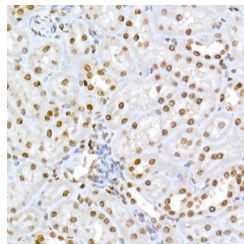
Clonality	Polyclonal
Clone ID	
Concentration	Lot specific
Conjugation	Unconjugated
Purification	Affinity purification
Dilution Range	WB:1:500-1:1000 IHC-P:1:50-1:200 ELISA:Recommended starting concentration is 1 µg/mL. Please optimize the concentration based on your specific assay requirements.
Formulation	PBS with 0.02% Sodium Azide, 50% Glycerol, pH 7.3.
Isotype	IgG
Storage Instruction	Store at -20°C for up to 1 year from the date of receipt, and avoid repeat freeze-thaw cycles.

TARGET INFORMATION

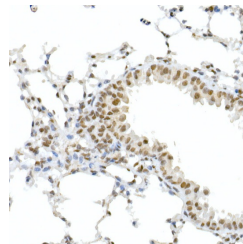
Gene ID	5925
Gene Symbol	RB1
Uniprot ID	RB_HUMAN
Immunogen	PSSPL
Immunogen Region	
Specificity	A synthetic phosphorylated peptide around S795 of human RB (NP_000312.2).
Immunogen Sequence	PSSPL



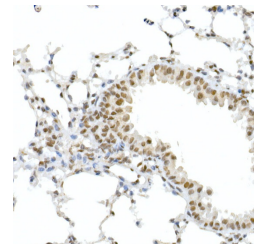
Western blot analysis of extracts of 293 cell line, using phospho-RB-S795 antibody (STJ22369). Secondary antibody: HRP Goat Anti-rabbit IgG (H+L) at 1:10000 dilution. Lysates/proteins: 25µg per lane. Blocking buffer: 3% BSA.



Immunohistochemistry analysis of paraffin-embedded rat kidney using Phospho-RB-S795 Rabbit polyclonal antibody (STJ22369) at dilution of 1:50 (40x lens). Perform high pressure antigen retrieval with 10 mM citrate buffer pH 6.0 before commencing with immunohistochemistry staining protocol.



Western blot analysis of extracts of K-562 cells, using Phospho-RB-S795 polyclonal antibody (STJ22369) at 1:1000 dilution or RB1 antibody (A16966). K-562 cells were treated by ATP (5 mM) at 30 °C for 1 hour. Secondary antibody: HRP Goat Anti-rabbit IgG (H+L) at 1:10000 dilution. Lysates/proteins: 25µg per lane. Blocking buffer: 3% BSA. Detection: ECL Basic Kit. Exposure time: 1s.



Immunohistochemistry analysis of paraffin-embedded mouse lung using Phospho-RB-S795 Rabbit polyclonal antibody (STJ22369) at dilution of 1:50 (40x lens). Perform high pressure antigen retrieval with 10 mM citrate buffer pH 6.0 before commencing with immunohistochemistry staining protocol.