

Anti-Phospho-PRKAA1/PRKAA2-T183/T172 antibody (STJ22339)

STJ22339

GENERAL INFORMATION

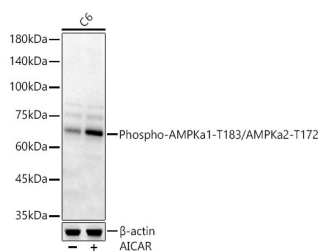
Product Type	Primary antibodies
Short Description	
Applications	WB/ELISA
Host/Source	Rabbit
Reactivity	Human/Mouse/Rat

PRODUCT PROPERTIES

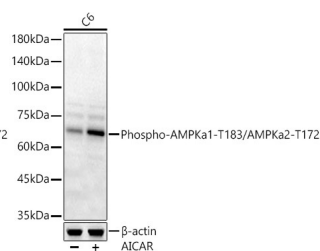
Clonality	Polyclonal
Clone ID	
Concentration	Lot specific
Conjugation	Unconjugated
Purification	Affinity purification
Dilution Range	WB:1:500-1:1000 ELISA:Recommended starting concentration is 1 Mu g/mL. Please optimize the concentration based on your specific assay requirements.
Formulation	PBS with 0.09% Sodium Azide, 50% Glycerol, pH 7.3.
Isotype	IgG
Storage Instruction	Store at -20°C for up to 1 year from the date of receipt, and avoid repeat freeze-thaw cycles.

TARGET INFORMATION

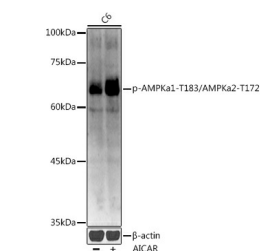
Gene ID	5562 5563
Gene Symbol	PRKAA1 PRKAA2
Uniprot ID	AAPK1_HUMAN AAPK2_HUMAN
Immunogen	LRTSC
Immunogen Region	
Specificity	A synthetic phosphorylated peptide around T183 of human PRKAA1 (NP_006242.5).
Immunogen Sequence	LRTSC



Western blot analysis of extracts of 293T cells, using Phospho-AMPKα1-T183/AMPKα2-T172 antibody (STJ22339) at 1:1000 dilution. 293T cells were treated by oligomycin (0.5 uM) at 37 °C for 30 minutes. Secondary antibody: HRP Goat Anti-rabbit IgG (H+L) at 1:10000 dilution. Lysates/proteins: 25ug per lane. Blocking buffer: 3% non-fat dry milk in TBST. Detection: ECL Basic Kit. Exposure time: 90s.



Western blot analysis of lysates from C6 cells, using Phospho-AMPKα1-T183/AMPKα2-T172 Rabbit polyclonal antibody (STJ22339) at 1:1000 dilution. C6 cells were treated by AICAR (0.5 mM) at 37 °C for 30 minutes after serum-starvation overnight. Secondary antibody: HRP Goat Anti-Rabbit IgG (H+L) (STJS000856) at 1:10000 dilution. Lysates/proteins: 25ug per lane. Blocking buffer: 3% nonfat dry milk in TBST. Detection: ECL Basic Kit. Exposure time: 90s.



Western blot analysis of extracts of C6 cells, using Phospho-AMPKα1-T183/AMPKα2-T172 antibody (STJ22339) at 1:1000 dilution. C6 cells were treated by AICAR (0.5 mM) at 37 °C for 30 minutes after serum-starvation overnight. Secondary antibody: HRP Goat Anti-rabbit IgG (H+L) at 1:10000 dilution. Lysates/proteins: 25ug per lane. Blocking buffer: 3% non-fat dry milk in TBST. Detection: ECL Enhanced Kit. Exposure time: 90s.

This product is suitable for in-vitro studies under the RESEARCH USE ONLY [RUO] licence. This product must not be used as for diagnostic or other medical purposes.
St John's Laboratory Ltd, Knowledge Dock Business Centre, University Way, London, E16 2RD | Tel: 0208 223 3081