

## Anti-Phospho-NFKB1-S893 antibody (STJ22310)

STJ22310

### GENERAL INFORMATION

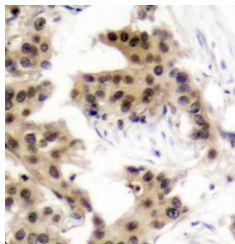
<b>Product Type</b>	Primary antibodies
<b>Short Description</b>	
<b>Applications</b>	IF/ICC
<b>Host/Source</b>	Rabbit
<b>Reactivity</b>	Human

### PRODUCT PROPERTIES

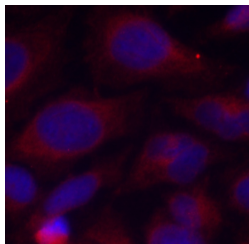
<b>Clonality</b>	Polyclonal
<b>Clone ID</b>	
<b>Concentration</b>	Lot specific
<b>Conjugation</b>	Unconjugated
<b>Purification</b>	Affinity purification
<b>Dilution Range</b>	IF/ICC:1:100-1:200
<b>Formulation</b>	PBS with 0.02% Sodium Azide, 50% Glycerol, pH 7.3.
<b>Isotype</b>	IgG
<b>Storage Instruction</b>	Store at -20°C for up to 1 year from the date of receipt, and avoid repeat freeze-thaw cycles.

### TARGET INFORMATION

<b>Gene ID</b>	4790
<b>Gene Symbol</b>	NFKB1
<b>Uniprot ID</b>	NFKB1_HUMAN
<b>Immunogen</b>	
<b>Immunogen Region</b>	
<b>Specificity</b>	A phospho specific peptide corresponding to residues surrounding S893 of human NFKB1
<b>Immunogen Sequence</b>	



Immunohistochemistry of paraffin-embedded human breast carcinoma using Phospho-NFKB1-S893 antibody (STJ22310).



Immunofluorescence analysis of methanol-fixed HeLa cells using Phospho-NFKB1-S893 antibody (STJ22310).

This product is suitable for in-vitro studies under the RESEARCH USE ONLY [RUO] licence. This product must not be used as for diagnostic or other medical purposes.  
St John's Laboratory Ltd, Knowledge Dock Business Centre, University Way, London, E16 2RD | Tel: 0208 223 3081