

Anti-Phospho-MAPT-S262 antibody (STJ22274)
STJ22274

GENERAL INFORMATION

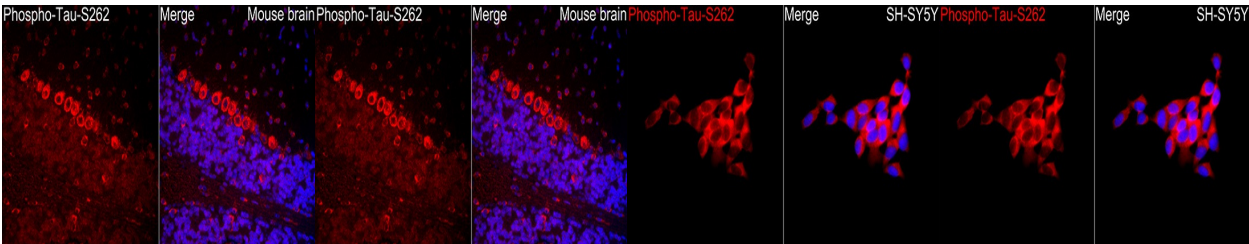
Product Type	Primary antibodies
Short Description	
Applications	WB/IF/ICC/ELISA
Host/Source	Rabbit
Reactivity	Human/Mouse/Rat

PRODUCT PROPERTIES

Clonality	Polyclonal
Clone ID	
Concentration	Lot specific
Conjugation	Unconjugated
Purification	Affinity purification
Dilution Range	WB:1:100-1:500 IF/ICC:1:100-1:200 ELISA:Recommended starting concentration is 1 µg/mL. Please optimize the concentration based on your specific assay requirements.
Formulation	PBS with 0.05% Proclin300, 50% Glycerol, pH 7.3.
Isotype	IgG
Storage Instruction	Store at -20°C for up to 1 year from the date of receipt, and avoid repeat freeze-thaw cycles.

TARGET INFORMATION

Gene ID	4137
Gene Symbol	MAPT
Uniprot ID	TAU_HUMAN
Immunogen	VTSKC
Immunogen Region	
Specificity	A synthetic phosphorylated peptide around S262 of Tau (NP_058518.1).
Immunogen Sequence	VTSKC



Western blot analysis of extracts of mouse brain, using Phospho-Tau-S262 antibody (STJ22274) at 1:500 dilution, mouse brain were treated by CIP (20µL/400µL) at 37 °C for 1 hour. Secondary antibody: HRP Goat Anti-rabbit IgG (H+L) at 1:10000 dilution. Lysates/proteins: 25µg per lane. Blocking buffer: 3% non-fat dry milk in TBS-T. Detection: ECL Enhanced Kit. Exposure time: 120s.

Immunofluorescence analysis of a paraffin-embedded mouse brain using a Phospho-Tau-S262 Rabbit polyclonal antibody (STJ22274) at a dilution of 1:100 (40x lens). Secondary antibody: Cy3 Goat Anti-Rabbit IgG (H+L) at 1:500 dilution. Blue: DAPI for nuclear staining. Perform microwave antigen retrieval with 0.01 M citrate buffer (pH 6.0) prior to IF staining.

Immunohistochemistry of paraffin-embedded rat hippocampal region tissue from a model with Alzheimer using Phospho-Tau-S262 antibody (STJ22274).

Immunofluorescence analysis of SH-SY5Y cells using a Phospho-Tau-S262 Rabbit polyclonal antibody (STJ22274) at a dilution of 1:100 (40x lens). Secondary antibody: Cy3 Goat Anti-Rabbit IgG (H+L) at 1:500 dilution. Blue: DAPI for nuclear staining.

This product is suitable for in-vitro studies under the RESEARCH USE ONLY [RUO] licence. This product must not be used as for diagnostic or other medical purposes.
St John's Laboratory Ltd, Knowledge Dock Business Centre, University Way, London, E16 2RD | Tel: 0208 223 3081