

## Anti-Phospho-MAPT-S404 antibody (STJ22272)

STJ22272

### GENERAL INFORMATION

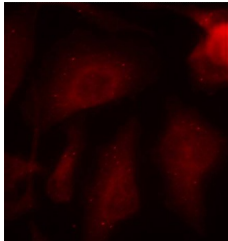
|                          |                       |
|--------------------------|-----------------------|
| <b>Product Type</b>      | Primary antibodies    |
| <b>Short Description</b> |                       |
| <b>Applications</b>      | WB/IHC-P/IF/ICC/ELISA |
| <b>Host/Source</b>       | Rabbit                |
| <b>Reactivity</b>        | Human/Mouse/Rat       |

### PRODUCT PROPERTIES

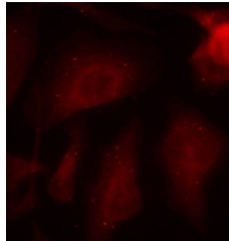
|                            |  |
|----------------------------|--|
| <b>Clonality</b>           | Polyclonal   |
| <b>Clone ID</b>            |  |
| <b>Concentration</b>       | Lot specific   |
| <b>Conjugation</b>         | Unconjugated   |
| <b>Purification</b>        | Affinity purification  |
| <b>Dilution Range</b>      | WB:1:500-1:2000<br>IHC-P:1:50-1:100<br>IF/ICC:1:100-1:200<br>ELISA:Recommended starting concentration is 1 µg/mL. Please optimize the concentration based on your specific assay requirements. |
| <b>Formulation</b>         | PBS with 0.01% Thimerosal, 50% Glycerol, pH 7.3.   |
| <b>Isotype</b>             | IgG  |
| <b>Storage Instruction</b> | Store at -20°C for up to 1 year from the date of receipt, and avoid repeat freeze-thaw cycles.   |

### TARGET INFORMATION

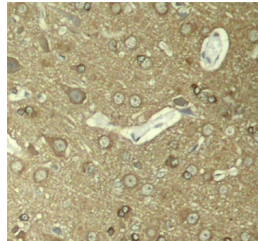
|                           |  |
|---------------------------|--|
| <b>Gene ID</b>            | 4137   |
| <b>Gene Symbol</b>        | MAPT   |
| <b>Uniprot ID</b>         | TAU_HUMAN  |
| <b>Immunogen</b>          | DTSPR  |
| <b>Immunogen Region</b>   |  |
| <b>Specificity</b>        | A synthetic phosphorylated peptide around S404 of human Tau (NP_005901.2). |
| <b>Immunogen Sequence</b> | DTSPR  |



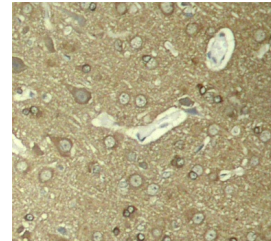
Western blot analysis of extracts of SH-SY5Y and C6 cells, using Phospho-Tau-S404 antibody (STJ22272) at 1:2000 dilution. SH-SY5Y cells were treated by Okadaic Acid (100nM) for 1 hour and Calyculin A (100nM) for 30 minutes after serum-starvation overnight. C6 cell lysates were treated by CIP at 37°C for 1 hour. Secondary antibody: HRP Goat Anti-rabbit IgG (H+L) at 1:10000 dilution. Lysates/proteins: 25µg per lane. Blocking buffer: 3% BSA. Detection: ECL Basic Kit. Exposure time: 3s.



Immunofluorescence analysis of methanol-fixed HeLa cells using Phospho-Tau-S404 Rabbit polyclonal antibody (STJ22272).



Immunohistochemistry of paraffin-embedded rat hippocampal region tissue from a model with Alzheimer, using Phospho-Tau-S404 antibody (STJ22272).



Immunohistochemistry analysis of Phospho-Tau-S404 in paraffin-embedded rat hippocampal region tissue from a model with Alzheimer, using Phospho-Tau-S404 Rabbit polyclonal antibody (STJ22272). Perform microwave antigen retrieval with 10 mM Tris/EDTA buffer pH 9.0 before commencing with immunohistochemistry staining protocol.

This product is suitable for in-vitro studies under the RESEARCH USE ONLY [RUO] licence. This product must not be used as for diagnostic or other medical purposes.  
St John's Laboratory Ltd, Knowledge Dock Business Centre, University Way, London, E16 2RD | Tel: 0208 223 3081