

Anti-Phospho-IGF1R-Y1161 antibody (STJ22186)

STJ22186

GENERAL INFORMATION

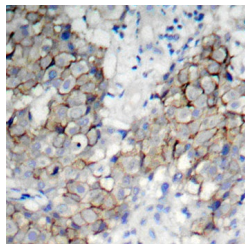
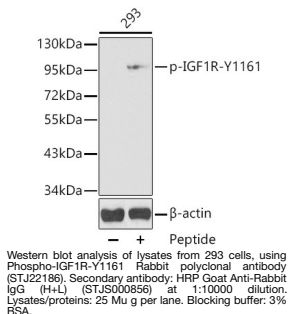
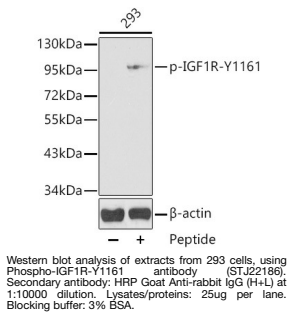
Product Type	Primary antibodies
Short Description	
Applications	WB/ELISA
Host/Source	Rabbit
Reactivity	Human/Mouse/Rat

PRODUCT PROPERTIES

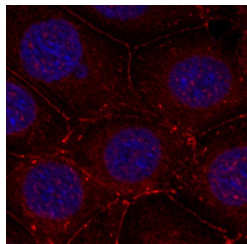
Clonality	Polyclonal
Clone ID	
Concentration	Lot specific
Conjugation	Unconjugated
Purification	Affinity purification
Dilution Range	WB:1:500-1:2000 ELISA:Recommended starting concentration is 1 Mu g/mL. Please optimize the concentration based on your specific assay requirements.
Formulation	PBS with 0.01% Thimerosal, 50% Glycerol, pH 7.3.
Isotype	IgG
Storage Instruction	Store at -20°C for up to 1 year from the date of receipt, and avoid repeat freeze-thaw cycles.

TARGET INFORMATION

Gene ID	3480
Gene Symbol	IGF1R
Uniprot ID	IGF1R_HUMAN
Immunogen	DIYET
Immunogen Region	
Specificity	A synthetic phosphorylated peptide around Y1161 of human IGF1R (NP_000866.1).
Immunogen Sequence	DIYET



Immunohistochemistry of paraffin-embedded human breast carcinoma using Phospho-IGF1R-Y1161 antibody (STJ22186).



Immunofluorescence analysis of methanol-fixed MCF-7 cells using Phospho-IGF1R-Y1161 antibody (STJ22186).

This product is suitable for in-vitro studies under the RESEARCH USE ONLY [RUO] licence. This product must not be used as for diagnostic or other medical purposes.
St John's Laboratory Ltd, Knowledge Dock Business Centre, University Way, London, E16 2RD | Tel: 0208 223 3081