

## Anti-Phospho-HSPB1-S15 antibody (STJ22178)

STJ22178

### GENERAL INFORMATION

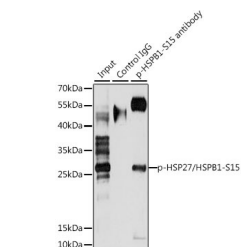
<b>Product Type</b>	Primary antibodies
<b>Short Description</b>	
<b>Applications</b>	WB/IP/ELISA
<b>Host/Source</b>	Rabbit
<b>Reactivity</b>	Human

### PRODUCT PROPERTIES

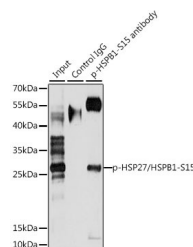
<b>Clonality</b>	Polyclonal
<b>Clone ID</b>	
<b>Concentration</b>	Lot specific
<b>Conjugation</b>	Unconjugated
<b>Purification</b>	Affinity purification
<b>Dilution Range</b>	WB:1:500-1:1000 IP:0.5 Mu g-4 Mu g antibody for 200 Mu g-400 Mu g extracts of whole cells ELISA:Recommended starting concentration is 1 Mu g/mL. Please optimize the concentration based on your specific assay requirements.
<b>Formulation</b>	PBS with 0.02% Sodium Azide, 50% Glycerol, pH 7.3.
<b>Isotype</b>	IgG
<b>Storage Instruction</b>	Store at -20°C for up to 1 year from the date of receipt, and avoid repeat freeze-thaw cycles.

### TARGET INFORMATION

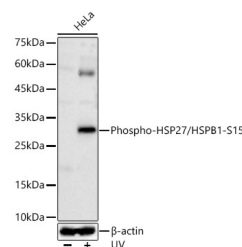
<b>Gene ID</b>	3315
<b>Gene Symbol</b>	HSPB1
<b>Uniprot ID</b>	HSPB1_HUMAN
<b>Immunogen</b>	GPSWD
<b>Immunogen Region</b>	
<b>Specificity</b>	A synthetic phosphorylated peptide around S15 of human HSP27/HSPB1 (NP_001531.1).
<b>Immunogen Sequence</b>	GPSWD



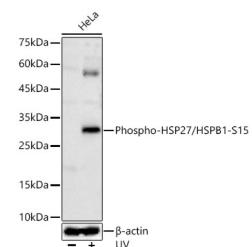
Western blot analysis of extracts of HeLa cells, using Phospho-HSP27/HSPB1-S15 antibody (STJ22178) at 1:1000 dilution. HeLa cells were treated by EGF (100ng/mL) for 30 minutes after serum-starvation overnight. Secondary antibody: HRP Goat Anti-rabbit IgG (H+L) at 1:10000 dilution. Lysates/proteins: 25ug per lane. Blocking buffer: 3% BSA. Detection: ECL Basic Kit. Exposure time: 5min.



Immunoprecipitation analysis of 200 Mu g extracts of HeLa cells, using 3 Mu g Phospho-HSP27/HSPB1-S15 polyclonal antibody (STJ22178). Western blot was performed from the immunoprecipitate using Phospho-HSP27/HSPB1-S15 polyclonal antibody (STJ22178) at a dilution of 1:1000. HeLa cells were treated by EGF (100 ng/mL) at 37 °C for 30 minutes after serum-starvation overnight.



Immunoprecipitation analysis of 200ug extracts of HeLa cells, using 3 ug Phospho-HSP27/HSPB1-S15 polyclonal antibody (STJ22178). Western blot was performed from the immunoprecipitate using Phospho-HSP27/HSPB1-S15 polyclonal antibody (STJ22178) at a dilution of 1:1000. HeLa cells were treated by EGF (100 ng/mL) at 37 °C for 30 minutes after serum-starvation overnight.



Western blot analysis of lysates from HeLa cells, using Phospho-HSP27/HSPB1-S15 Rabbit polyclonal antibody (STJ22178) at 1:500 dilution. HeLa cells were treated by UV at room temperature for 15-30 minutes. Secondary antibody: HRP Goat Anti-Rabbit IgG (H+L) (STJ5000856) at 1:10000 dilution. Lysates/proteins: 25 Mu g per lane. Blocking buffer: 3% nonfat dry milk in TBST. Detection: ECL Basic Kit. Exposure time: 30s.

This product is suitable for in-vitro studies under the RESEARCH USE ONLY [RUO] licence. This product must not be used as for diagnostic or other medical purposes.  
St John's Laboratory Ltd, Knowledge Dock Business Centre, University Way, London, E16 2RD | Tel: 0208 223 3081