

Anti-Phospho-HDAC8-S39 antibody (STJ22168)

STJ22168

GENERAL INFORMATION

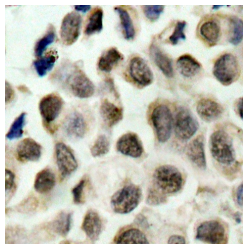
Product Type	Primary antibodies
Short Description	
Applications	IF/ICC
Host/Source	Rabbit
Reactivity	Human

PRODUCT PROPERTIES

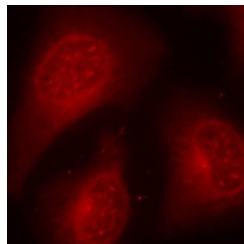
Clonality	Polyclonal
Clone ID	
Concentration	Lot specific
Conjugation	Unconjugated
Purification	Affinity purification
Dilution Range	IF/ICC:1:100-1:200
Formulation	PBS with 0.02% Sodium Azide, 50% Glycerol, pH 7.3.
Isotype	IgG
Storage Instruction	Store at -20°C for up to 1 year from the date of receipt, and avoid repeat freeze-thaw cycles.

TARGET INFORMATION

Gene ID	55869
Gene Symbol	HDAC8
Uniprot ID	HDAC8_HUMAN
Immunogen	
Immunogen Region	
Specificity	A phospho specific peptide corresponding to residues surrounding S39 of human HDAC8
Immunogen Sequence	



Immunohistochemistry of paraffin-embedded human lung carcinoma using Phospho-HDAC8-S39 antibody (STJ22168).



Immunofluorescence analysis of methanol-fixed HeLa cells using Phospho-HDAC8-S39 antibody (STJ22168).

This product is suitable for in-vitro studies under the RESEARCH USE ONLY [RUO] licence. This product must not be used as for diagnostic or other medical purposes.
St John's Laboratory Ltd, Knowledge Dock Business Centre, University Way, London, E16 2RD | Tel: 0208 223 3081