

Anti-Phospho-FOXO1-S256 antibody (STJ22144)

STJ22144

GENERAL INFORMATION

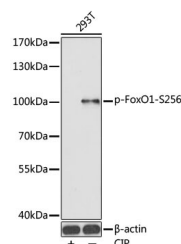
Product Type	Primary antibodies
Short Description	
Applications	WB/IF/ICC/ELISA
Host/Source	Rabbit
Reactivity	Human/Mouse/Rat

PRODUCT PROPERTIES

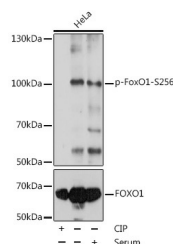
Clonality	Polyclonal
Clone ID	
Concentration	Lot specific
Conjugation	Unconjugated
Purification	Affinity purification
Dilution Range	WB:1:500-1:1000 IF/ICC:1:50-1:200 ELISA:Recommended starting concentration is 1 µg/mL. Please optimize the concentration based on your specific assay requirements.
Formulation	PBS with 0.05% Proclin300, 50% Glycerol, pH 7.3.
Isotype	IgG
Storage Instruction	Store at -20°C for up to 1 year from the date of receipt, and avoid repeat freeze-thaw cycles.

TARGET INFORMATION

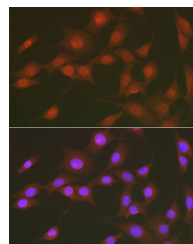
Gene ID	2308
Gene Symbol	FOXO1
Uniprot ID	FOXO1_HUMAN
Immunogen	AASMD
Immunogen Region	
Specificity	A synthetic phosphorylated peptide around S256 of human FoxO1 (NP_002006.2).
Immunogen Sequence	AASMD



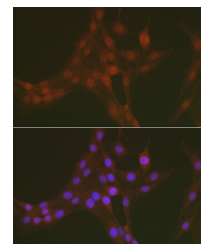
Western blot analysis of extracts of 293T cells, using Phospho-FoxO1-S256 antibody (STJ22144). 293T were treated by CIP (20µl CIP for each 400µl cell lysate) at 37 °C for 1 hour. Secondary antibody: HRP Goat Anti-rabbit IgG (H+L) at 1:10000 dilution. Lysates/proteins: 25µg per lane. Blocking buffer: 3% BSA. Detection: ECL Basic Kit. Exposure time: 90s.



Western blot analysis of extracts of HeLa cells, using Phospho-FoxO1-S256 polyclonal antibody (STJ22144) at 1:1000 dilution or FOXO1 antibody (STJ115801). HeLa cell lysate were treated by CIP (20µl CIP for each 400µl cell lysate) at 37 °C for 1 hour or treated by 10% FBS at 37 °C for 30 minutes after serum-starvation overnight. Secondary antibody: HRP Goat Anti-rabbit IgG (H+L) at 1:10000 dilution. Lysates/proteins: 25µg per lane. Blocking buffer: 3% BSA. Detection: ECL Basic Kit. Exposure time: 2s.



Immunofluorescence analysis of NIH/3T3 using Phospho-FoxO1-S256 antibody (STJ22144) at dilution of 1:50. Blue: DAPI for nuclear staining.



Immunofluorescence analysis of PC-12 using Phospho-FoxO1-S256 antibody (STJ22144) at dilution of 1:50. Blue: DAPI for nuclear staining.

This product is suitable for in-vitro studies under the RESEARCH USE ONLY [RUO] licence. This product must not be used as for diagnostic or other medical purposes.
St John's Laboratory Ltd, Knowledge Dock Business Centre, University Way, London, E16 2RD | Tel: 0208 223 3081