

Anti-Phospho-CDK2-T160 antibody (STJ22062)

STJ22062

GENERAL INFORMATION

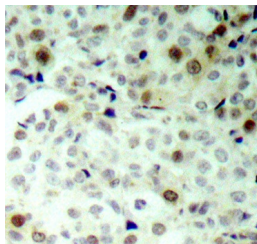
Product Type	Primary antibodies
Short Description	
Applications	WB/IHC-P/ELISA
Host/Source	Rabbit
Reactivity	Human/Mouse/Rat

PRODUCT PROPERTIES

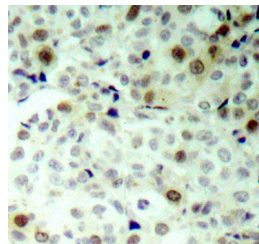
Clonality	Polyclonal
Clone ID	
Concentration	Lot specific
Conjugation	Unconjugated
Purification	Affinity purification
Dilution Range	WB:1:100-1:500 IHC-P:1:50-1:100 ELISA:Recommended starting concentration is 1 µg/mL. Please optimize the concentration based on your specific assay requirements.
Formulation	PBS with 0.02% Sodium Azide, 50% Glycerol, pH 7.3.
Isotype	IgG
Storage Instruction	Store at -20°C for up to 1 year from the date of receipt, and avoid repeat freeze-thaw cycles.

TARGET INFORMATION

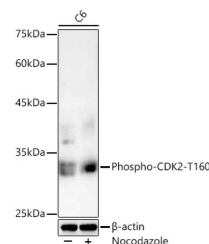
Gene ID	1017
Gene Symbol	CDK2
Uniprot ID	CDK2_HUMAN
Immunogen	TYTHE
Immunogen Region	
Specificity	A synthetic phosphorylated peptide around T160 of human CDK2 (NP_001789.2?/NP_001249.1).
Immunogen Sequence	TYTHE



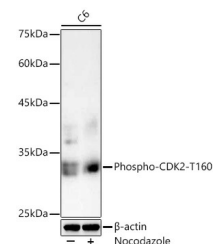
Western blot analysis of extracts of various cell lines, using Phospho-CDK2-T160 antibody (STJ22062) at 1:1000 dilution. HeLa cells NIH/3T3 cells and C6 cells were treated by nocodazole (50 ng/ml) at 37 °C for 20 hours. Secondary antibody: HRP Goat Anti-rabbit IgG (H+L) at 1:10000 dilution. Lysates/proteins: 25µg per lane. Blocking buffer: 3% non-fat dry milk in TBST. Detection: ECL Enhanced Kit. Exposure time: 180s.



Immunohistochemistry analysis of Phospho-CDK2-T160 in paraffin-embedded human breast carcinoma using Phospho-CDK2-T160 Rabbit polyclonal antibody (STJ22062). Perform microwave antigen retrieval with 10 mM Tris/EDTA buffer pH 9.0 before commencing with immunohistochemistry staining protocol.



Immunohistochemistry of paraffin-embedded human breast carcinoma using Phospho-CDK2-T160 antibody (STJ22062).



Western blot analysis of lysates from C6 cells using Phospho-CDK2-T160 Rabbit polyclonal antibody (STJ22062) at 1:1000 dilution. C6 cells were treated by Nocodazole (10 ng/ml) at 37 °C for 20 hours. Secondary antibody:HRP Goat Anti-Rabbit IgG (H+L) (STJ5000656) at 1:10000 dilution. Lysates/proteins: 20A µg per lane. Blocking buffer: 3% nonfat dry milk in TBST. Detection:ECL Basic Kit. Exposuretime:3s.

This product is suitable for in-vitro studies under the RESEARCH USE ONLY [RUO] licence. This product must not be used as for diagnostic or other medical purposes.
St John's Laboratory Ltd, Knowledge Dock Business Centre, University Way, London, E16 2RD | Tel: 0208 223 3081