

Anti-Phospho-CDK1-Y15 antibody (STJ22059)
STJ22059

GENERAL INFORMATION

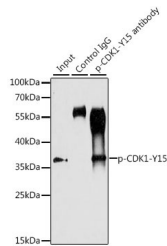
Product Type	Primary antibodies
Short Description	
Applications	WB/IHC-P/IF/ICC/IP/ELISA
Host/Source	Rabbit
Reactivity	Human/Mouse/Rat

PRODUCT PROPERTIES

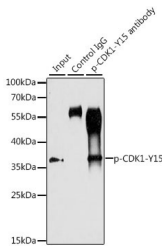
Clonality	Polyclonal
Clone ID	
Concentration	Lot specific
Conjugation	Unconjugated
Purification	Affinity purification
Dilution Range	WB:1:500-1:1000 IHC-P:1:50-1:200 IF/ICC:1:50-1:200 IP:0.5 Mu g-4 Mu g antibody for 200 Mu g-400 Mu g extracts of whole cells ELISA:Recommended starting concentration is 1 Mu g/mL. Please optimize the concentration based on your specif
Formulation	PBS with 0.02% Sodium Azide, 50% Glycerol, pH 7.3.
Isotype	IgG
Storage Instruction	Store at-20°C for up to 1 year from the date of receipt, and avoid repeat freeze-thaw cycles.

TARGET INFORMATION

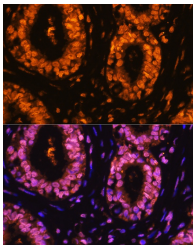
Gene ID	983
Gene Symbol	CDK1
Uniprot ID	CDK1_HUMAN
Immunogen	GTYGV
Immunogen Region	
Specificity	A synthetic phosphorylated peptide around Y15 of human CDK1 (NP_001777.1).
Immunogen Sequence	GTYGV



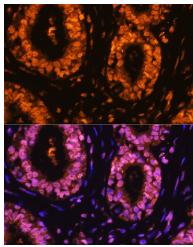
Western blot analysis of extracts of HT-29 and HeLa cells, using Phospho-CDK1-Y15 antibody (STJ22059) at 1:1000 dilution. HT-29 cells were treated by serum-starvation overnight. HeLa cells were treated by UV for 15-30 minutes. Secondary antibody: HRP Goat Anti-rabbit IgG (H+L) at 1:10000 dilution. Lysates/proteins: 25ug per lane. Blocking buffer: 3% BSA. Detection: ECL Basic Kit. Exposure time: 1min.



Immunoprecipitation analysis of 200 Mu g extracts of HT-29 cells, using 3 Mu g Phospho-CDK1-Y15 polyclonal antibody (STJ22059). Western blot was performed from the immunoprecipitate using Phospho-CDK1-Y15 polyclonal antibody (STJ22059) at a dilution of 1:1000. HT-29 cells were treated by Serum-starvation overnight at 37 °C.



Western blot analysis of extracts of NIH/3T3 cells, using phospho-STK4-T387 polyclonal antibody (STJ22059) at 1:1000 dilution or CDK1 antibody (A0220). HeLa cells were treated by nocodazole (50 ng/mL) at 37 °C for 20 hours or Hydroxyurea (4 mM) at 37 °C for 20 hours. Secondary antibody: HRP Goat Anti-rabbit IgG (H+L) at 1:10000 dilution. Lysates/proteins: 25ug per lane. Blocking buffer: 3% BSA. Detection: ECL Basic Kit. Exposure time: 1s.



Immunofluorescence analysis of paraffin-embedded human breast cancer using Phospho-CDK1-Y15 Rabbit polyclonal antibody (STJ22059) at dilution of 1:100 (40x lens). Secondary antibody: Cy3 Goat Anti-Rabbit IgG (H+L) at 1:500 dilution. Blue: DAPI for nuclear staining.

This product is suitable for in-vitro studies under the RESEARCH USE ONLY [RUO] licence. This product must not be used as for diagnostic or other medical purposes.
St John's Laboratory Ltd, Knowledge Dock Business Centre, University Way, London, E16 2RD | Tel: 0208 223 3081