

Anti-Phospho-BRCA1-S988 antibody (STJ22045)

STJ22045

GENERAL INFORMATION

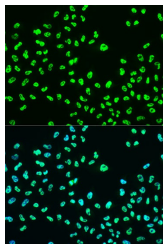
Product Type	Primary antibodies
Short Description	
Applications	IHC-P/IF/ICC/ELISA
Host/Source	Rabbit
Reactivity	Human

PRODUCT PROPERTIES

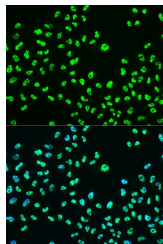
Clonality	Polyclonal
Clone ID	
Concentration	Lot specific
Conjugation	Unconjugated
Purification	Affinity purification
Dilution Range	IHC-P:1:50-1:200 IF/ICC:1:50-1:200 ELISA:Recommended starting concentration is 1 µg/mL. Please optimize the concentration based on your specific assay requirements.
Formulation	PBS with 0.02% Sodium Azide, 50% Glycerol, pH 7.3.
Isotype	IgG
Storage Instruction	Store at -20°C for up to 1 year from the date of receipt, and avoid repeat freeze-thaw cycles.

TARGET INFORMATION

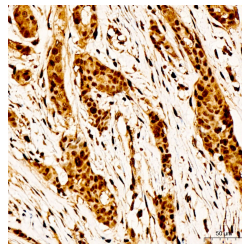
Gene ID	672
Gene Symbol	BRCA1
Uniprot ID	BRCA1_HUMAN
Immunogen	IKSFV
Immunogen Region	
Specificity	A synthetic phosphorylated peptide around S988 of human BRCA1 (NP_009225.1).
Immunogen Sequence	IKSFV



Immunofluorescence analysis of U2OS cells using Phospho-BRCA1-S988 antibody (STJ22045) at dilution of 1:100. Blue: DAPI for nuclear staining.



Immunofluorescence analysis of U2OS cells using Phospho-BRCA1-S988 Rabbit polyclonal antibody (STJ22045) at dilution of 1:100. Secondary antibody: Cy3 Goat Anti-Rabbit IgG (H+L) at 1:500 dilution. Blue: DAPI for nuclear staining.



Immunohistochemistry analysis of a Phospho-BRCA1-S988 in paraffin-embedded human breast cancer tissue using a Phospho-BRCA1-S988 Rabbit polyclonal antibody (STJ22045) at a dilution of 1:100 (40x lens). High pressure antigen retrieval was performed with 0.01 M Tris-EDTA buffer (pH 9.0) prior to immunohistochemistry staining.

This product is suitable for in-vitro studies under the RESEARCH USE ONLY [RUO] licence. This product must not be used as for diagnostic or other medical purposes.
St John's Laboratory Ltd, Knowledge Dock Business Centre, University Way, London, E16 2RD | Tel: 0208 223 3081