

Anti-Phospho-BCL2L1-S62 antibody (STJ22039)

STJ22039

GENERAL INFORMATION

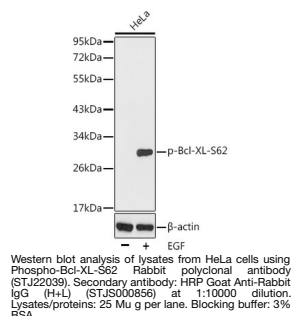
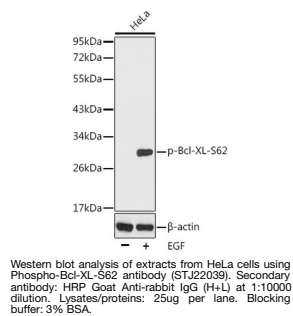
Product Type	Primary antibodies
Short Description	
Applications	WB/IF/ICC
Host/Source	Rabbit
Reactivity	Human/Mouse/Rat

PRODUCT PROPERTIES

Clonality	Polyclonal
Clone ID	
Concentration	Lot specific
Conjugation	Unconjugated
Purification	Affinity purification
Dilution Range	WB:1:500-1:2000 IF/CC:1:50-1:100
Formulation	PBS with 0.02% Sodium Azide, 50% Glycerol, pH 7.3.
Isotype	IgG
Storage Instruction	Store at -20°C for up to 1 year from the date of receipt, and avoid repeat freeze-thaw cycles.

TARGET INFORMATION

Gene ID	598
Gene Symbol	BCL2L1
Uniprot ID	B2CL1_HUMAN
Immunogen	
Immunogen Region	
Specificity	A phospho specific peptide corresponding to residues surrounding S62 of human Bcl-XL
Immunogen Sequence	



This product is suitable for in-vitro studies under the RESEARCH USE ONLY [RUO] licence. This product must not be used as for diagnostic or other medical purposes.
St John's Laboratory Ltd, Knowledge Dock Business Centre, University Way, London, E16 2RD | Tel: 0208 223 3081