

Anti-ECD antibody (236-286 aa) (STJ198327)

STJ198327

GENERAL INFORMATION

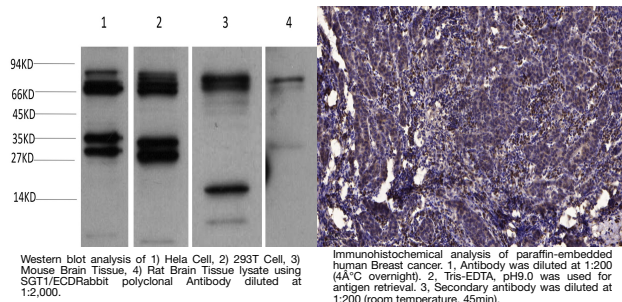
| | |
|--------------------------|---|
| Product Type | Primary antibodies |
| Short Description | Rabbit polyclonal antibody anti-Protein ecdysoneless homolog (236-286 aa) is suitable for use in Immunohistochemistry and Western Blot research applications. |
| Applications | IHC/WB |
| Host/Source | Rabbit |
| Reactivity | Human/Mouse/Rat |

PRODUCT PROPERTIES

| | |
|-----------------------|---|
| Clonality | Polyclonal |
| Clone ID | |
| Concentration | 1 mg/mL |
| Conjugation | Unconjugated |
| Purification | The antibody was affinity-purified from rabbit antiserum by affinity-chromatography using epitope-specific immunogen. |
| Dilution Range | IHC-P 1:50-200 WB 1:1000-2000 |
| Formulation | Liquid in PBS containing 50% Glycerol, 0.5% BSA and 0.02% Sodium Azide. |
| Isotype | IgG |
| Storage | Store at -20°C for up to 1 year from the date of receipt, and avoid repeat freeze-thaw cycles. |
| Instruction | |

TARGET INFORMATION

| | |
|---------------------------|---|
| Gene ID | 11319 |
| Gene Symbol | ECD |
| Uniprot ID | ECD_HUMAN |
| Immunogen | Synthesized peptide derived from the human SGT1/ECD at the amino acid range 236-286 |
| Immunogen Region | 236-286 aa |
| Specificity | This antibody detects endogenous levels of SGT1/ECD at Human, Mouse, Rat |
| Immunogen Sequence | |



This product is suitable for in-vitro studies under the RESEARCH USE ONLY [RUO] licence. This product must not be used as for diagnostic or other medical purposes.
St John's Laboratory Ltd, Knowledge Dock Business Centre, University Way, London, E16 2RD | Tel: 0208 223 3081