

Anti-MPPED2 antibody (143-193 aa) (STJ198144)

STJ198144

GENERAL INFORMATION

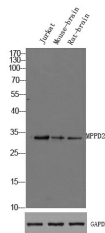
Product Type	Primary antibodies
Short Description	Rabbit polyclonal antibody anti-Metallophosphoesterase MPPED2 (143-193 aa) is suitable for use in Western Blot research applications.
Applications	WB
Host/Source	Rabbit
Reactivity	Human/Mouse/Rat

PRODUCT PROPERTIES

Clonality	Polyclonal
Clone ID	
Concentration	1 mg/mL
Conjugation	Unconjugated
Purification	The antibody was affinity-purified from rabbit antiserum by affinity-chromatography using epitope-specific immunogen.
Dilution Range	WB 1:1000-2000
Formulation	Liquid in PBS containing 50% Glycerol, 0.5% BSA and 0.02% Sodium Azide.
Isotype	IgG
Storage Instruction	Store at -20°C for up to 1 year from the date of receipt, and avoid repeat freeze-thaw cycles.

TARGET INFORMATION

Gene ID	744
Gene Symbol	MPPED2
Uniprot ID	MPPED2_HUMAN
Immunogen	Synthesized peptide derived from the human MPPED2 at the amino acid range 143-193
Immunogen Region	143-193 aa
Specificity	This antibody detects endogenous levels of human MPPED2
Immunogen Sequence	



Western Blot analysis of Jurkat mouse-brain, rat-brain cell lysis. primary Antibody was diluted at 1:1000. Secondary antibody (catalog#-STJS000791) was diluted at 1:10000

This product is suitable for in-vitro studies under the RESEARCH USE ONLY [RUO] licence. This product must not be used as for diagnostic or other medical purposes.
St John's Laboratory Ltd, Knowledge Dock Business Centre, University Way, London, E16 2RD | Tel: 0208 223 3081