

Anti-ATG14 antibody (STJ197438)

STJ197438

GENERAL INFORMATION

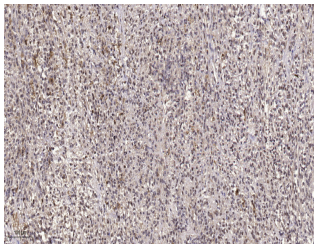
Product Type	Primary antibodies
Short Description	Rabbit polyclonal antibody anti-Beclin 1-associated autophagy-related key regulator is suitable for use in Immunohistochemistry and Immunofluorescence research applications.
Applications	IHC/IF
Host/Source	Rabbit
Reactivity	Human/Mouse/Rat

PRODUCT PROPERTIES

Clonality	Polyclonal
Clone ID	
Concentration	1 mg/mL
Conjugation	Unconjugated
Purification	The antibody was affinity-purified from rabbit antiserum by affinity-chromatography using epitope-specific immunogen.
Dilution Range	IHC-P 1:50-300 IF 1:50-200
Formulation	Liquid in PBS containing 50% Glycerol, 0.5% BSA and 0.02% Sodium Azide.
Isotype	IgG
Storage	Store at -20°C for up to 1 year from the date of receipt, and avoid repeat freeze-thaw cycles.
Instruction	

TARGET INFORMATION

Gene ID	22863
Gene Symbol	ATG14
Uniprot ID	BAKOR_HUMAN
Immunogen	Recombinant Protein of ATG14L
Immunogen Region	
Specificity	The antibody detects endogenous ATG14L protein
Immunogen Sequence	



Immunohistochemical analysis of paraffin-embedded human small intestinal carcinoma tissue. 1, primary Antibody was diluted at 1:200 (4A°C overnight). 2, Sodium citrate pH 6.0 was used for antigen retrieval (>98A°C, 20min). 3, Secondary antibody was diluted at 1:200