

Anti-CALHM1 antibody (204-254 aa) (STJ197420)

STJ197420

GENERAL INFORMATION

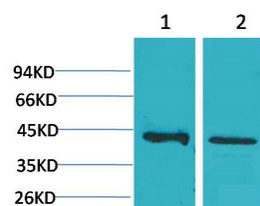
Product Type	Primary antibodies
Short Description	Rabbit polyclonal antibody anti-Calcium homeostasis modulator protein 1 (204-254 aa) is suitable for use in Western Blot, Immunohistochemistry and Immunofluorescence research applications.
Applications	WB/IHC/IF
Host/Source	Rabbit
Reactivity	Human/Rat

PRODUCT PROPERTIES

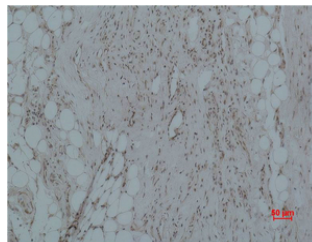
Clonality	Polyclonal
Clone ID	
Concentration	
Conjugation	Unconjugated
Purification	The antibody was affinity-purified from rabbit antiserum by affinity-chromatography using epitope-specific immunogen.
Dilution Range	WB 1:500-1000 IHC 1:200-500 IF 1:50-200
Formulation	Liquid in PBS pH7.4, 0.5% BSA, 0.02% Sodium Azide and 50% Glycerol.
Isotype	IgG
Storage	Store at -20°C for up to 1 year from the date of receipt, and avoid repeat freeze-thaw cycles.
Instruction	

TARGET INFORMATION

Gene ID	255022
Gene Symbol	CALHM1
Uniprot ID	CAHM1_HUMAN
Immunogen	Synthetic peptide derived from CALHM1 at the amino acid range 204-254
Immunogen Region	204-254 aa
Specificity	The antibody detects endogenous CALHM1 protein.
Immunogen Sequence	



Western blot analysis of 1) Human Brain Tissue, 2) Rat Brain Tissue using CALHM1 Polyclonal Antibody. Secondary antibody (STJ99666) was diluted at 1:20000



Immunohistochemical analysis of paraffin-embedded Human Hepatocarcinoma using CALHM1 Polyclonal Antibody.

This product is suitable for in-vitro studies under the RESEARCH USE ONLY [RUO] licence. This product must not be used as for diagnostic or other medical purposes.
St John's Laboratory Ltd, Knowledge Dock Business Centre, University Way, London, E16 2RD | Tel: 0208 223 3081