

Anti-Pan-CACNA1C antibody (1288-1338 aa) (STJ197418)

STJ197418

GENERAL INFORMATION

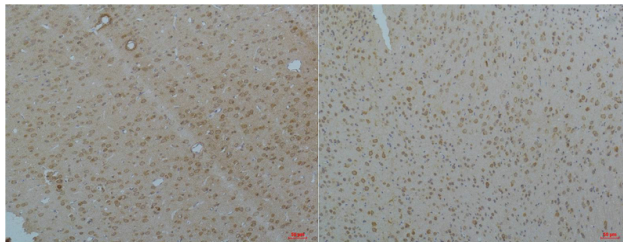
Product Type	Primary antibodies
Short Description	Rabbit polyclonal antibody anti-Pan-Voltage-dependent L-type calcium channel subunit alpha-1C (1288-1338 aa) is suitable for use in Immunohistochemistry and Immunofluorescence research applications.
Applications	IHC/IF
Host/Source	Rabbit
Reactivity	Human/Rat/Mouse

PRODUCT PROPERTIES

Clonality	Polyclonal
Clone ID	
Concentration	1 mg/mL
Conjugation	Unconjugated
Purification	The antibody was affinity-purified from rabbit antiserum by affinity-chromatography using epitope-specific immunogen.
Dilution	IHC 1:100-200
Range	IF 1:50-200
Formulation	Liquid in PBS containing 50% Glycerol, 0.5% BSA and 0.02% Sodium Azide.
Isotype	IgG
Storage	Store at -20°C for up to 1 year from the date of receipt, and avoid repeat freeze-thaw cycles.
Instruction	

TARGET INFORMATION

Gene ID	775
Gene Symbol	CACNA1C
Uniprot ID	CAC1C_HUMAN
Immunogen	Synthetic peptide derived from Cav pan Alpha 1 at the amino acid range 1288-1338
Immunogen Region	1288-1338 aa
Specificity	Cav pan Alpha 1 protein (A211) detects endogenous levels of Cav pan Alpha 1
Immunogen Sequence	



Immunohistochemical analysis of paraffin-embedded Rat Brain Tissue using Cav pan 1:1Rabbit pAb diluted at 1:200.

Immunohistochemical analysis of paraffin-embedded mouse Brain Tissue using Cav pan 1:1Rabbit pAb diluted at 1:200.

This product is suitable for in-vitro studies under the RESEARCH USE ONLY [RUO] licence. This product must not be used as for diagnostic or other medical purposes.
St John's Laboratory Ltd, Knowledge Dock Business Centre, University Way, London, E16 2RD | Tel: 0208 223 3081