

Anti-CACNA1D antibody (1060-1140 aa) (STJ197416)

STJ197416

GENERAL INFORMATION

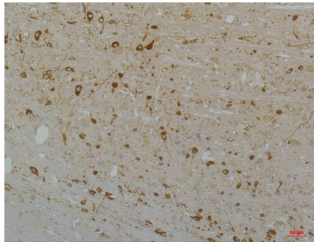
Product Type	Primary antibodies
Short Description	Rabbit polyclonal antibody anti-Voltage-dependent L-type calcium channel subunit alpha-1D (1060-1140 aa) is suitable for use in Immunohistochemistry and Immunofluorescence research applications.
Applications	IHC/IF
Host/Source	Rabbit
Reactivity	Human/Rat/Mouse

PRODUCT PROPERTIES

Clonality	Polyclonal
Clone ID	
Concentration	1 mg/mL
Conjugation	Unconjugated
Purification	The antibody was affinity-purified from rabbit antiserum by affinity-chromatography using epitope-specific immunogen.
Dilution	IHC 1:100-200
Range	IF 1:50-200
Formulation	Liquid in PBS containing 50% Glycerol, 0.5% BSA and 0.02% Sodium Azide.
Isotype	IgG
Storage	Store at -20°C for up to 1 year from the date of receipt, and avoid repeat freeze-thaw cycles.
Instruction	

TARGET INFORMATION

Gene ID	776
Gene Symbol	CACNA1D
Uniprot ID	CAC1D_HUMAN
Immunogen	Synthetic peptide derived from Cav1.3 at the amino acid range 1060-1140
Immunogen Region	1060-1140 aa
Specificity	Cav1.3 protein (A202) detects endogenous levels of Cav1.3
Immunogen Sequence	



Immunohistochemical analysis of paraffin-embedded Rat Brain Tissue using Cav1.3 Rabbit pAb diluted at 1:200.

This product is suitable for in-vitro studies under the RESEARCH USE ONLY [RUO] licence. This product must not be used as for diagnostic or other medical purposes.
St John's Laboratory Ltd, Knowledge Dock Business Centre, University Way, London, E16 2RD | Tel: 0208 223 3081